

USED AND PROPOSED INDICATORS AT CZECH ENVIRONMENTAL INSPECTORATE

FENCL, JIŘÍ, SVOBODOVÁ, JANA and ŠREMER, PAVEL

Czech Environmental Inspectorate (CEI)

1 INTRODUCTION

The Czech Republic is increasing its international cooperation efforts, especially in light of its acceptance for European Union membership, which is scheduled to take place on 1 May 2004. The Czech Environmental Inspectorate (CEI) entered the European Union Network for the Implementation and Enforcement of Environmental Law (IMPEL) on 1 January 2003. Representatives of CEI also collaborate with the International Network for Environmental Compliance and Enforcement (INECE) and the Regional Environmental Center for Central and Eastern Europe (REC).

In this paper, we will describe quantitative and semi-qualitative indicators used at CEI. We also describe the indicators creation process and submit certain proposals.

As an introduction, it is worthwhile to outline a few basic facts on CEI.

- CEI is the supervisory body of the State Administration of the Czech Republic in the field of environmental protection.
- The mission of CEI is to protect the environment through enforcement of environmental laws and international commitments.
- The Air, Water, Waste, Nature and Forest Protection Departments of CEI compound practically all aspects of environmental protection and consequently ensure the existence of the conditions necessary for sustainable development in the Czech Republic.
- The Czech Republic promotes enforcement of new national environmental legislative (established with respect to EU legislation). CEI is responsible for decreasing the burden of past environmental damage to air and water resources and for managing solid wastes and chemical substances to limit accidental and deliberate pollution events.

Recently, CEI has worked to evaluate the effectiveness of environmental inspection activities by applying existing and new formulated input and output indicators. An example of an indicator used by CEI is the number of people employed by the Inspectorate. Employees increased from 303 in 1992 to 650 in 2003, primarily as a result of upcoming access to the EU. This increase in inspectors has meant that there is one inspector per 24,500 inhabitants or per 182 km². In 2002, CEI inspectors carried out 17,774 inspections (42 inspections per inspector); imposed 2,343 penalties for 69,086,974 Czech crowns (2.3 million euro); and took 836 corrective measures.

CEI is also researching the possibilities of application of outcome indicators. However, utilization of outcome indicators has not been fully realized due to a highly fragmented State Administration, which limits the capacity to allocate results towards individual body.

2 CURRENT USE OF INDICATORS

Currently are used at CEI following indicators:

- **Input indicators.** Quantitative input indicators include number of inspectors in CEI; regional inspectorates; number of trained inspectors per year. Semi-qualitative input indicators include the number of training days/inspector/year and the number of foreign business trips/inspector/year. See figure 1.
- **Output quantitative indicators.** As output quantitative indicators are used to measure: the structure of CEI activities and its trends; the total number of inspections according to different environmental media in the time series; the number of revisions and administrative decisions issued in the time series; administrative decisions of remedial character in the time series; accidents on

waters in the time series; trends in number of statements and audits for other authorities in the time series; the number of requests for information according to particular laws in the time series; activity trends in area of air, water protection, waste/chemical substances in the time series; activity trends in nature/forest protection in the time series. See figures 2-8.

Although quantitative indicators are useful in some cases, they frequently are inadequate because they are not indicative of the quality of inspection work. Semi-qualitative indicators, on the other hand, are much better to measure quality of inspection work. Of course, in this case, it is impossible to qualify them directly as qualitative indicators. CEI uses semi-qualitative indicators to:

- Provide information to the public (number of justified appeals against not giving information in relation to total number of requests for information, number of requests for information about activities of CEI as body)
- Measure complaints of public towards CEI and about damages to the environment (number of justified complaints in relation to total number)
- Measure the number of changed administrative decisions on fines after appeal in relation to original number of appeals
- Show the relation of the number of underlimited/overlimited emission measurements to total number of measurements. See figures 8-13.

In relation to the problem of new indicators, CEI contributes the following experiences:

- CEI has investigated the utilization of new suggested indicators, primarily as a method to show the relationship between corrective measures and fines and semi-aggregated indicators. See figure 14 and 15. Figure 14 shows that, according to initial results, individual departments of environment protection are successful depending on the applicability/relevance of particular laws. The indicator displayed in figure 15, which shows the relationship of the number of corrective measures to the number of fines in a time series, could serve for comparison of rational activities of individual regional inspectorates.
- CEI's other experience consists of formulating semi-aggregated indicators, according to example of economic ones, e.g. GNP, GDP, etc. We are considering developing a simplified universal indicator. We propose that the "universal" indicator be a value that takes into account the number of inspections, administrative decisions, statements for another bodies and solved complaints – i.e. basic activities of CEI. From the results of figures 16-19, the dates have practically similar values, characteristic for individual departments and regional inspectorates, as well. It will be very suitable to find the reason of relatively big differences between the number of activities per inspector in individual regional inspectorates. Of course, other development is necessary.

3 CONCLUSION

We suggest, by means of a designated committee and corresponding IMPEL project, to establish system of comparative indicators for EU countries linked with work of INECE and OECD. According to the standard of INECE network, it would be necessary to establish a working group for individual effective indicators for Europe, especially in relation to minimum criteria for inspections/inspectors and in respect to other IMPEL projects (e.g., the Environmental Management Reference Manual for Inspectorates). While we understand the complexity of this task, which could be caused, for example, by the different competencies of enforcement bodies in various countries, it would be a very important project, particularly in the creation of aggregated indicators. CEI proposed the creation of an aggregated indicator similar to the Gross National Product that would measure, instead, the Gross Inspectorate Product. After consensus at international level on common performance indicators, it will be

important to start testing these indicators in pilot countries. The Czech Minister of the Environment further proposes that Czech Republic serve as a pilot project country to test the indicator program and contribute to the solution of these questions.

Appendixes

Figure 1

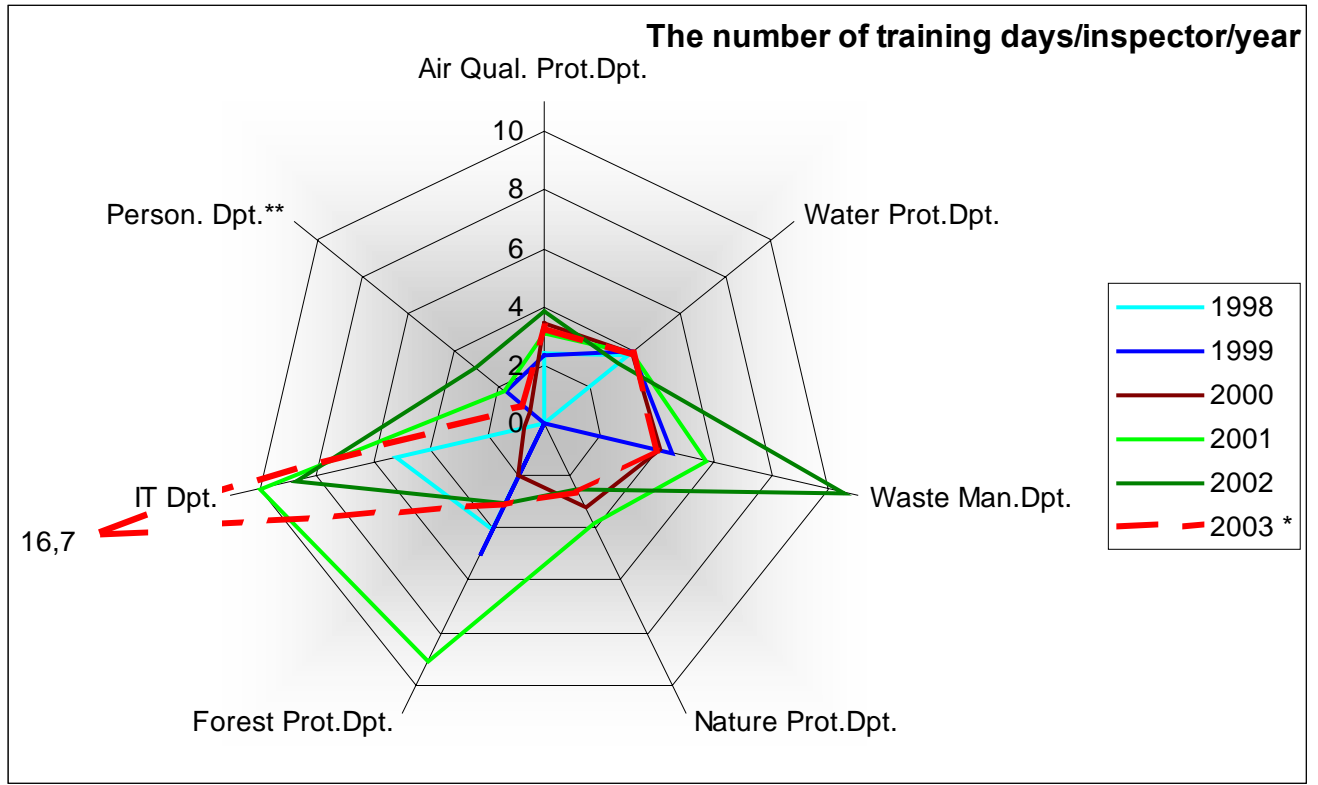


Figure 2

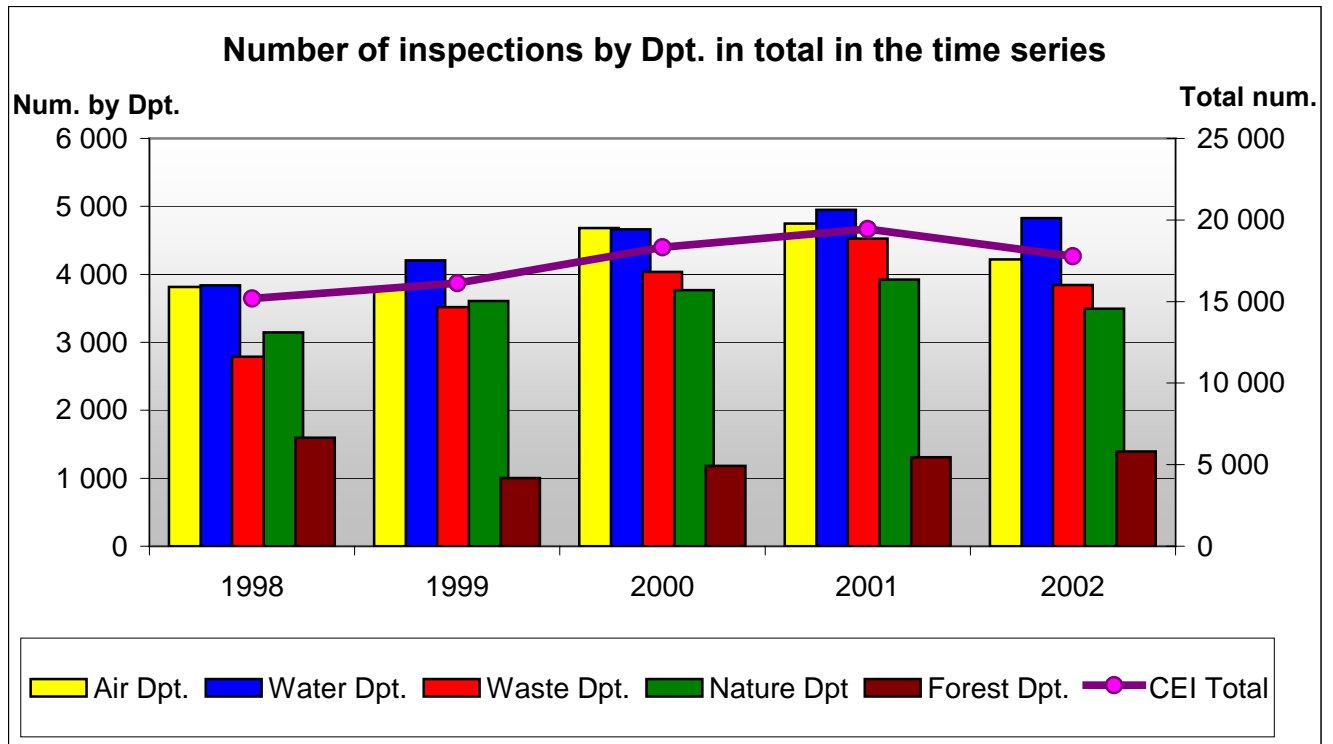


Figure 3

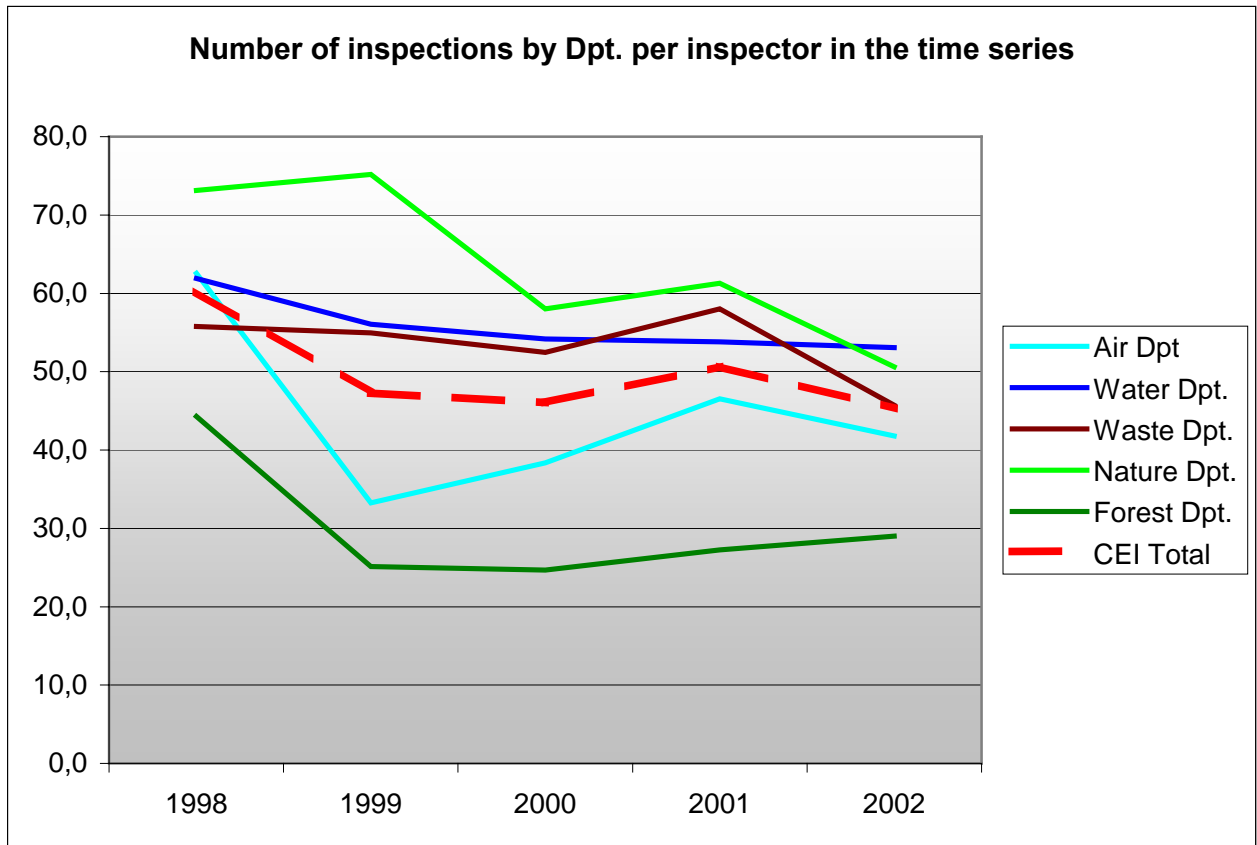


Figure 4

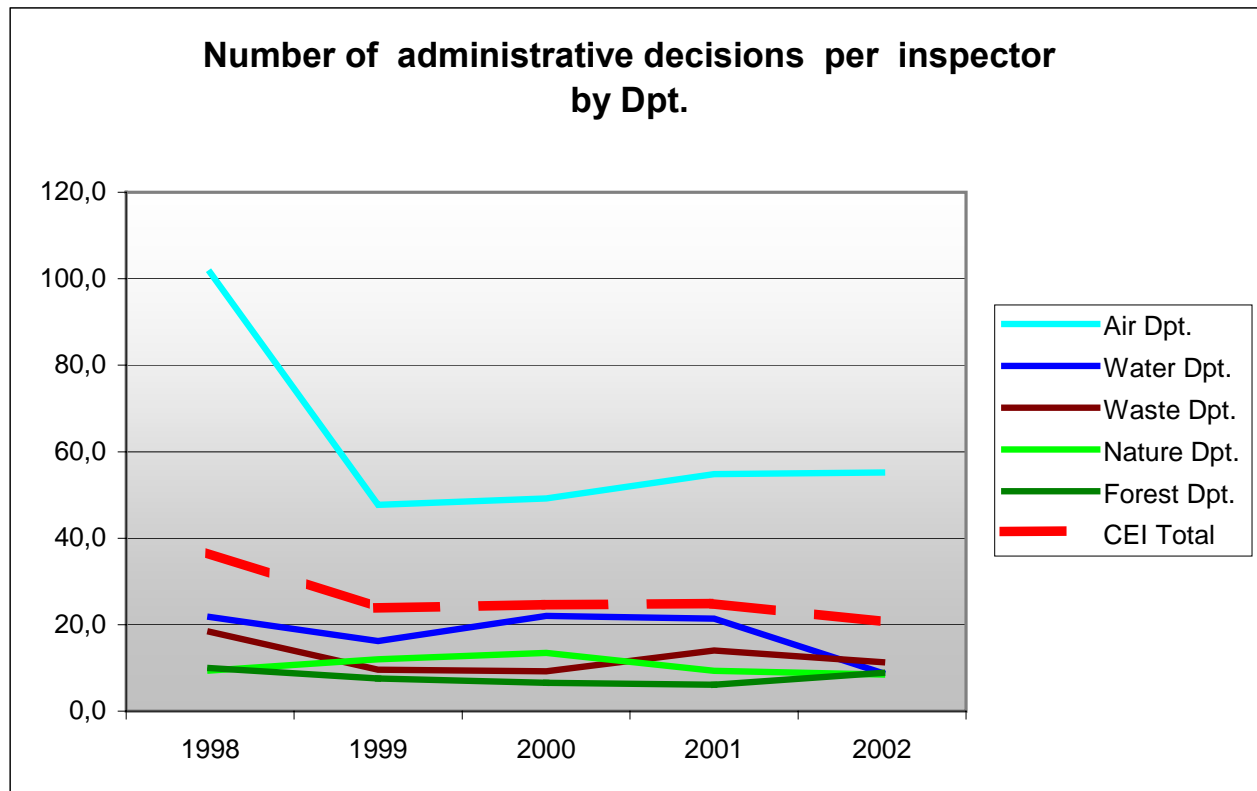


Figure 5

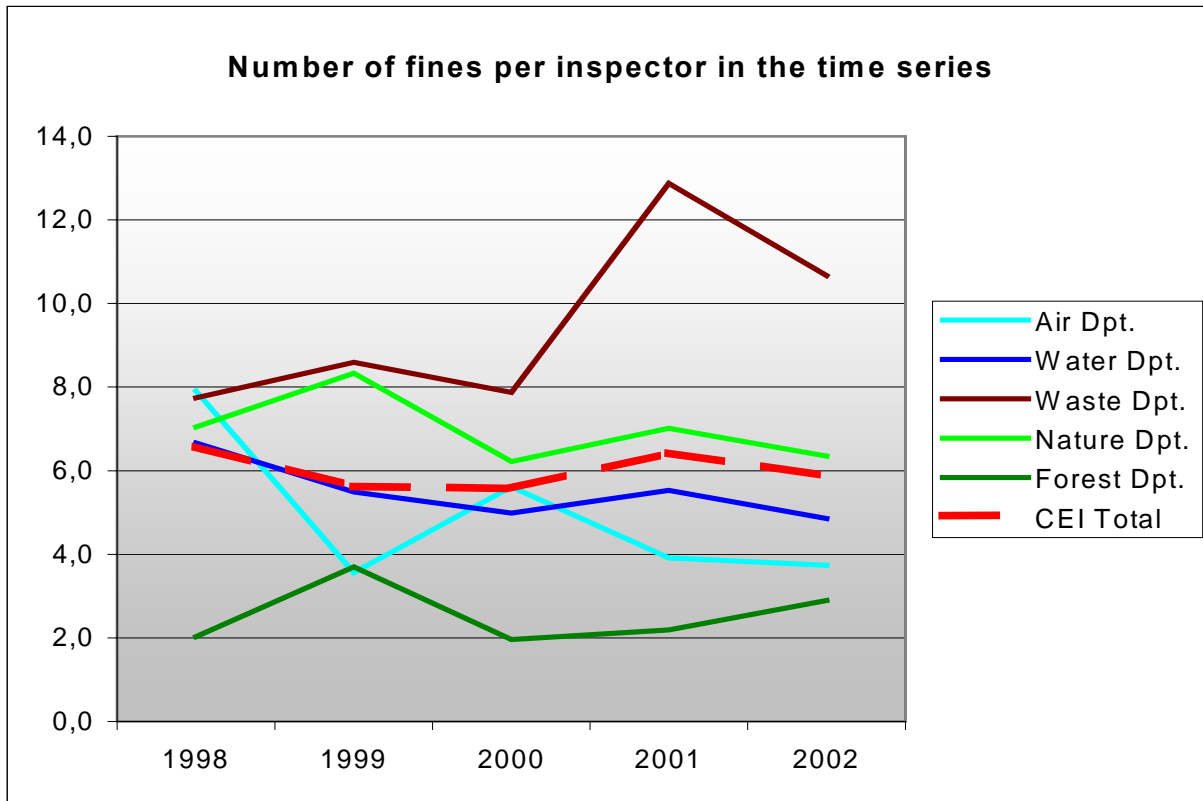


Figure 6

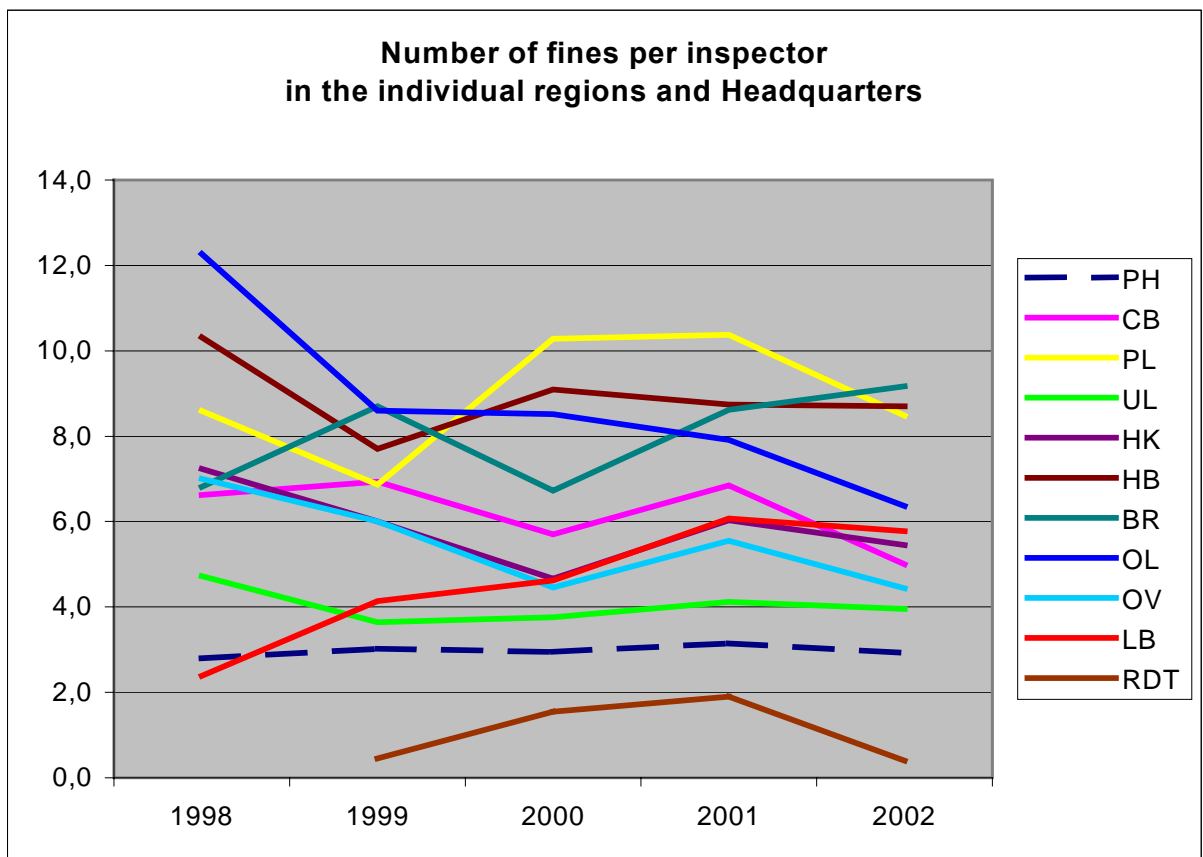
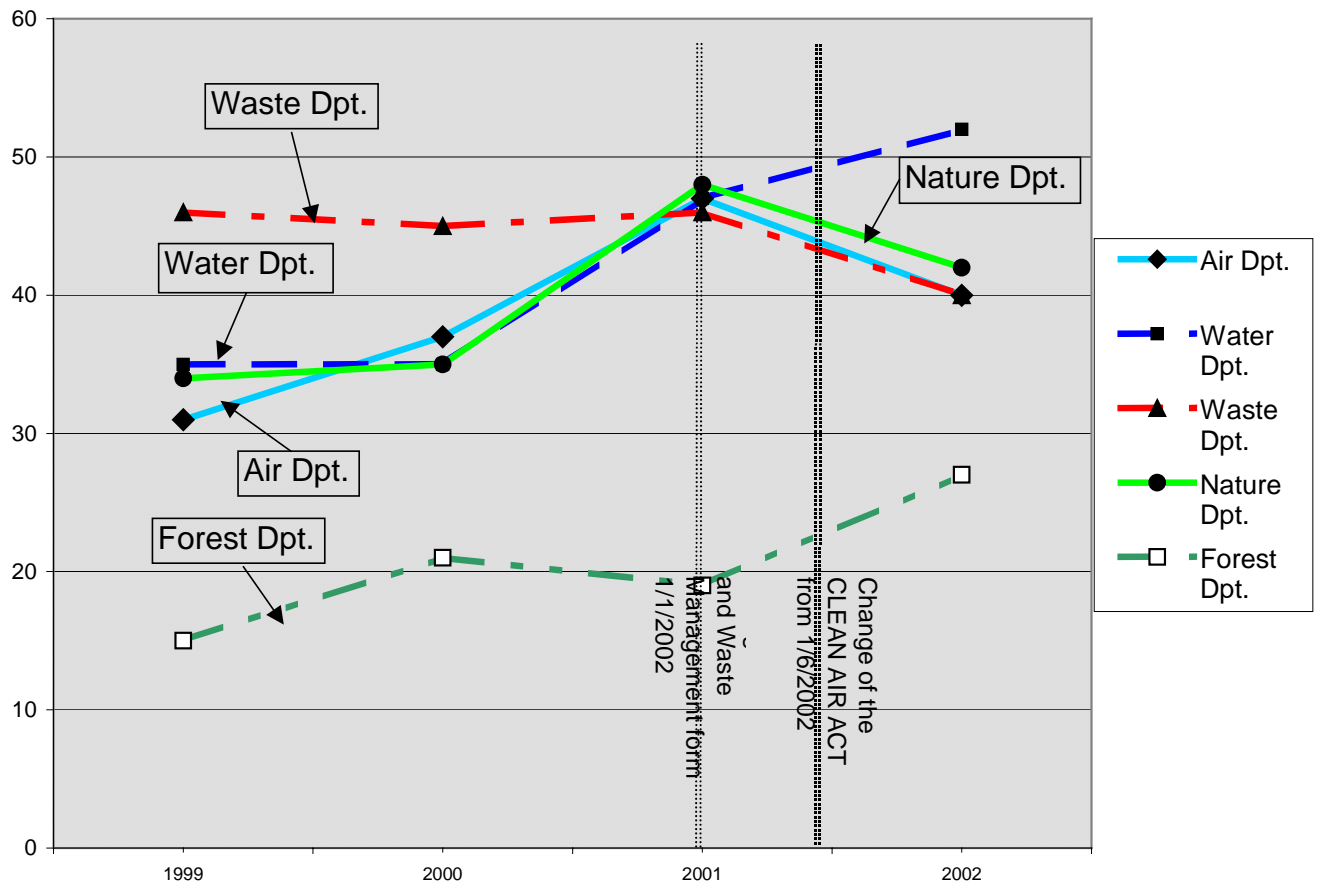


Figure 7

Number of changed admin. decisions on fines after appeal towards total original number of appeal in % at individual departments



Number of the corrective measures per inspector in the time series

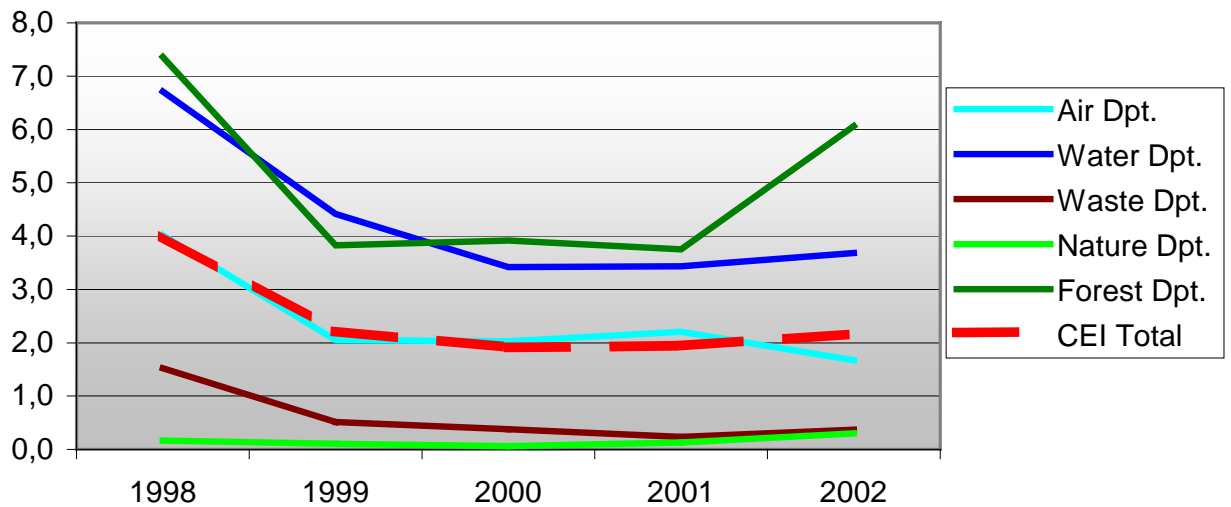


Figure 8

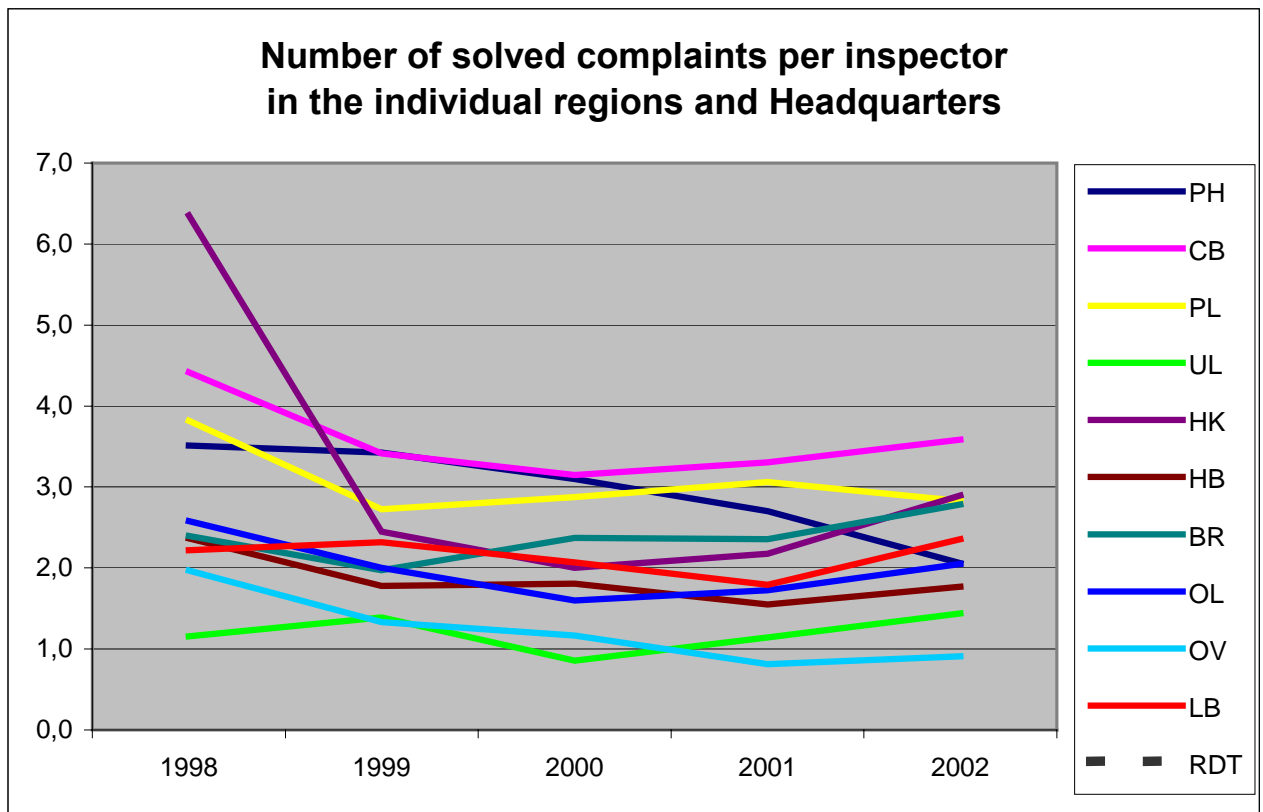


Figure 9

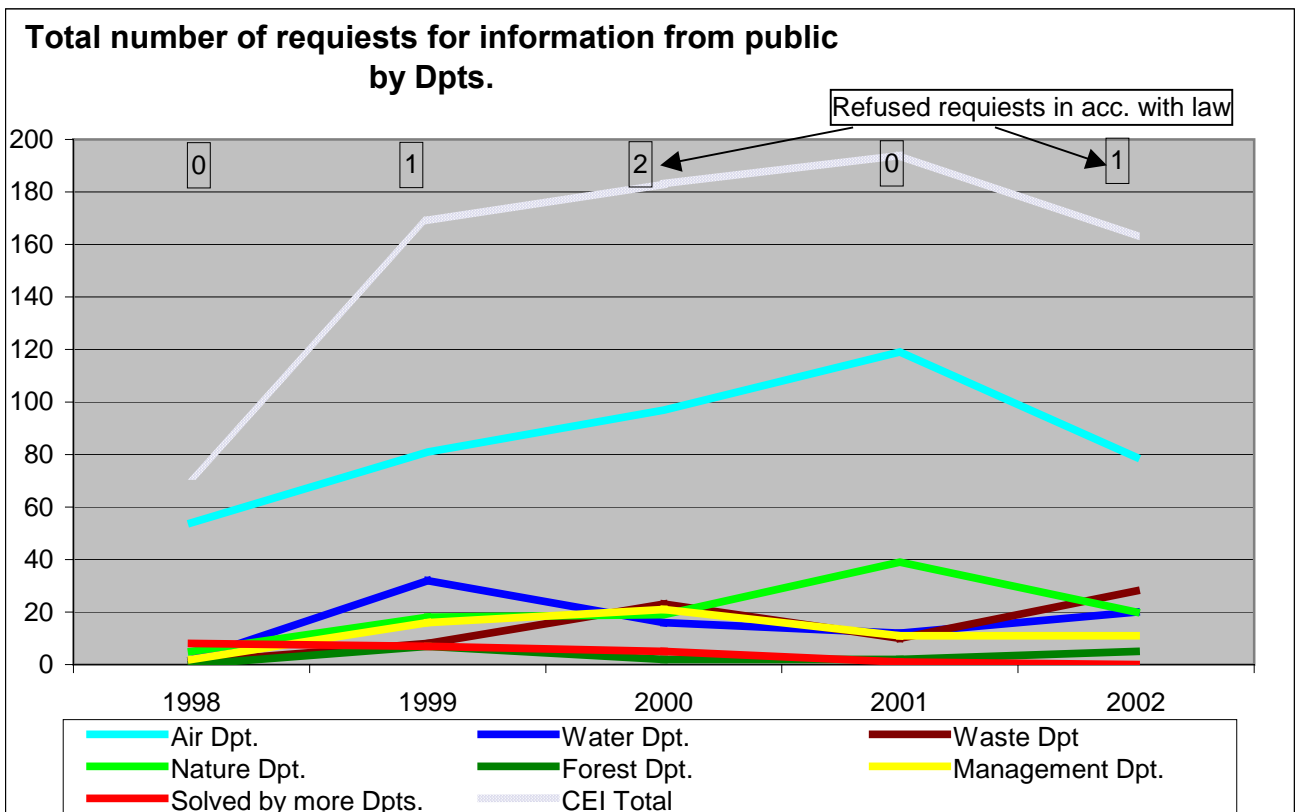


Figure 10

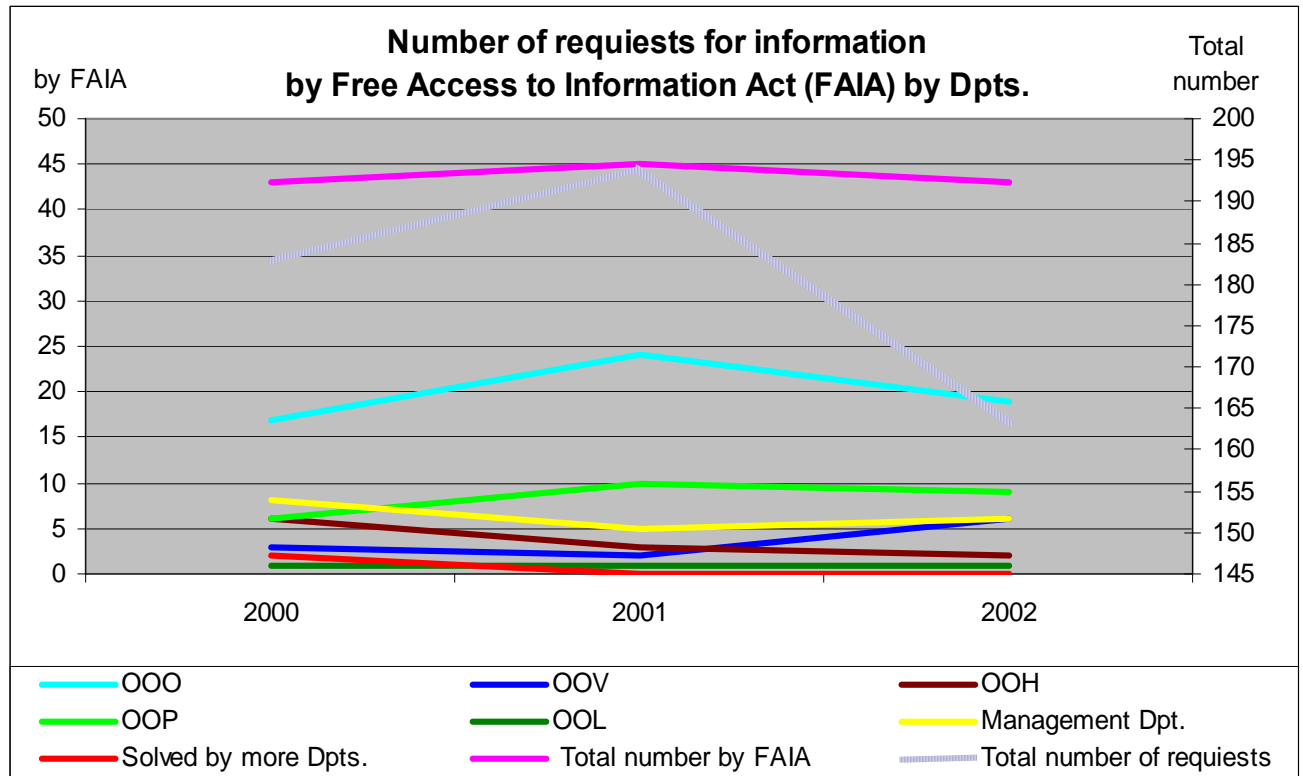


Figure 11

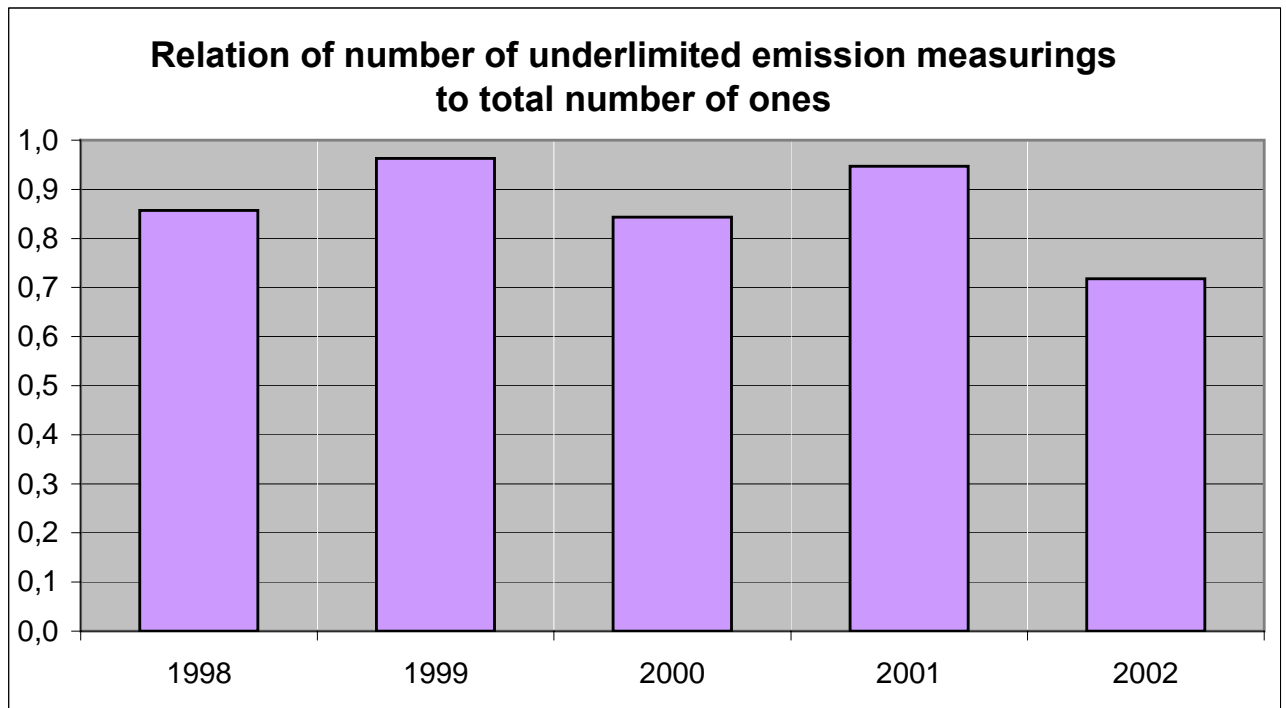


Figure 13

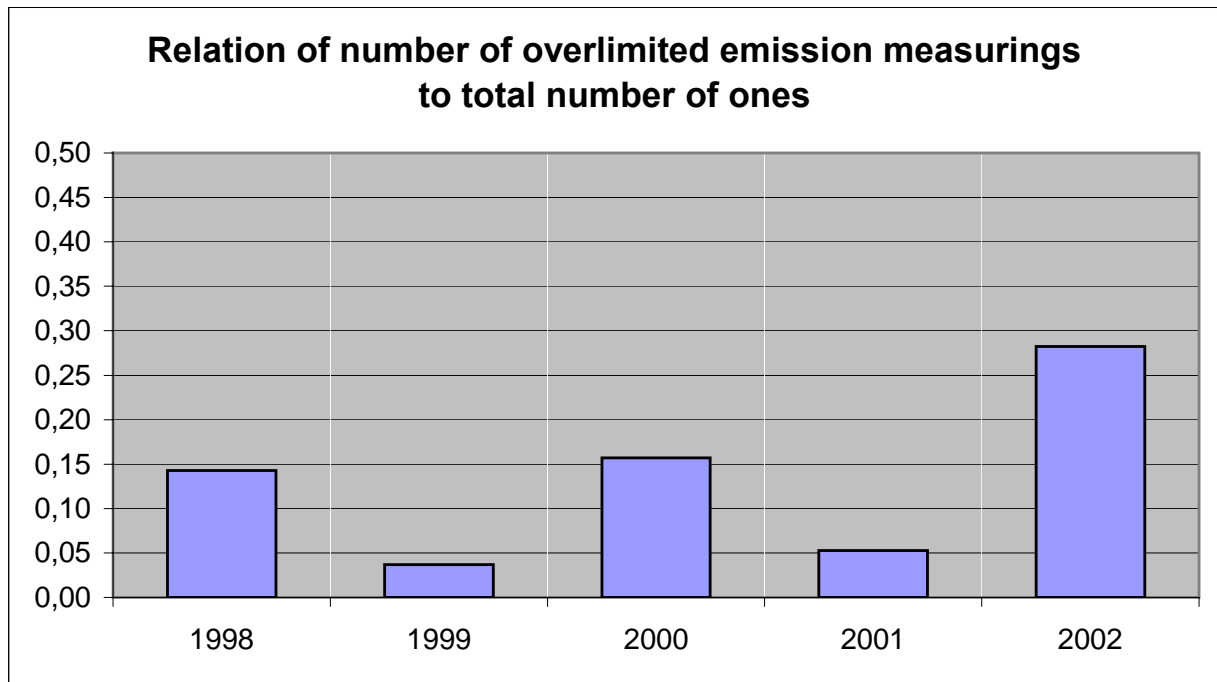


Figure 14

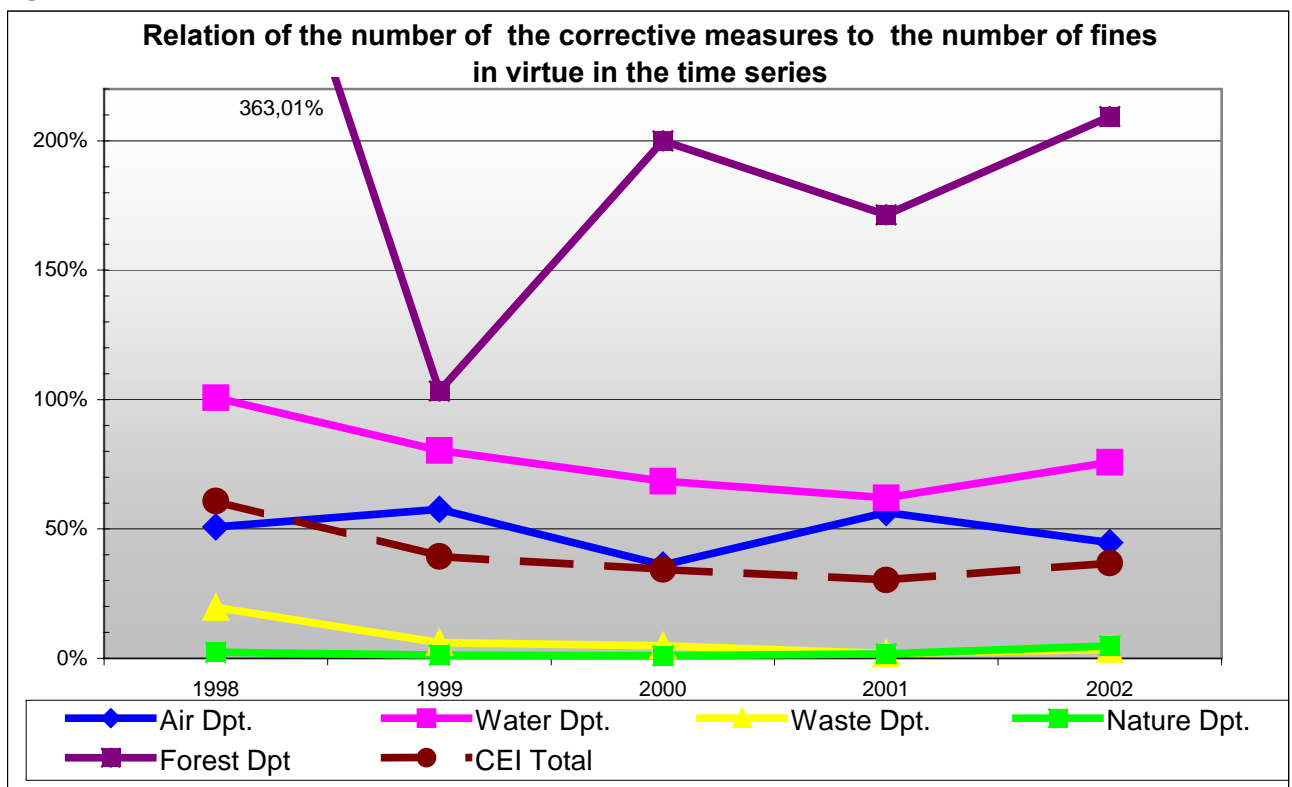


Figure 15

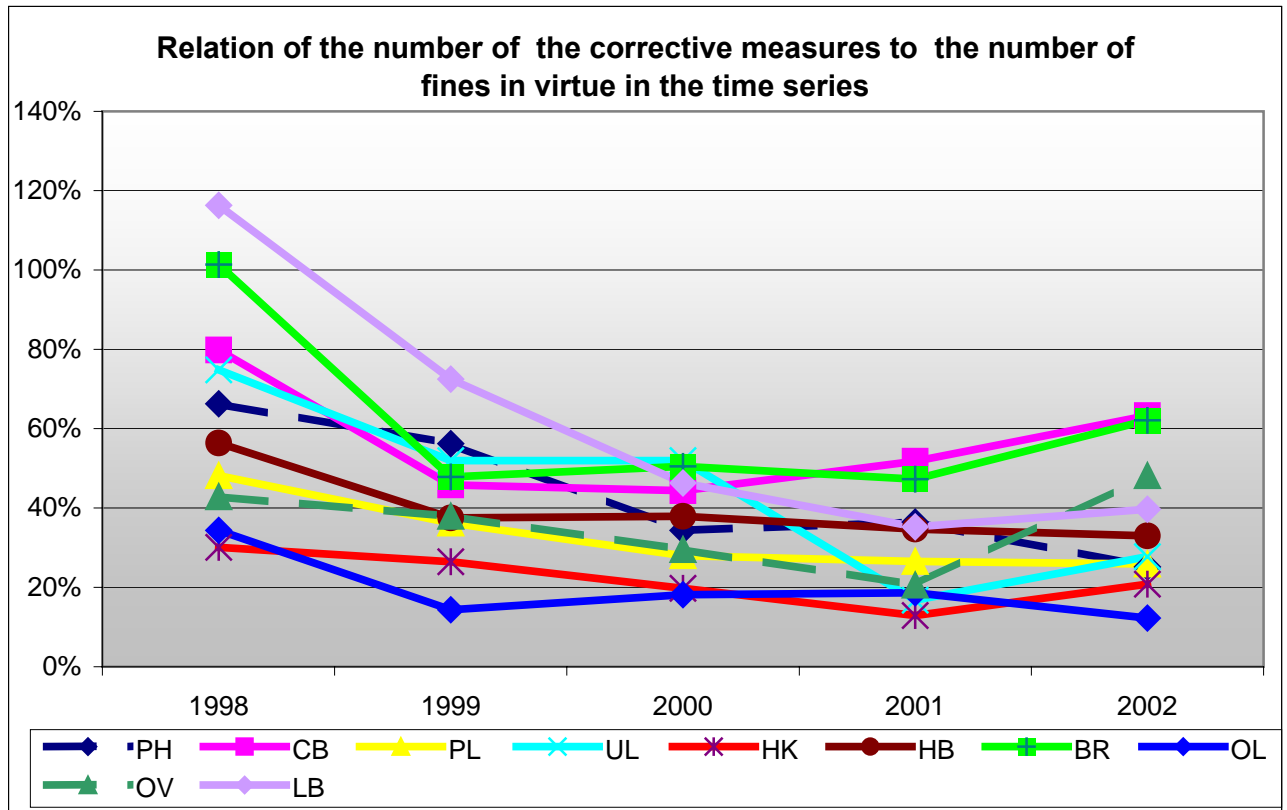


Figure 16

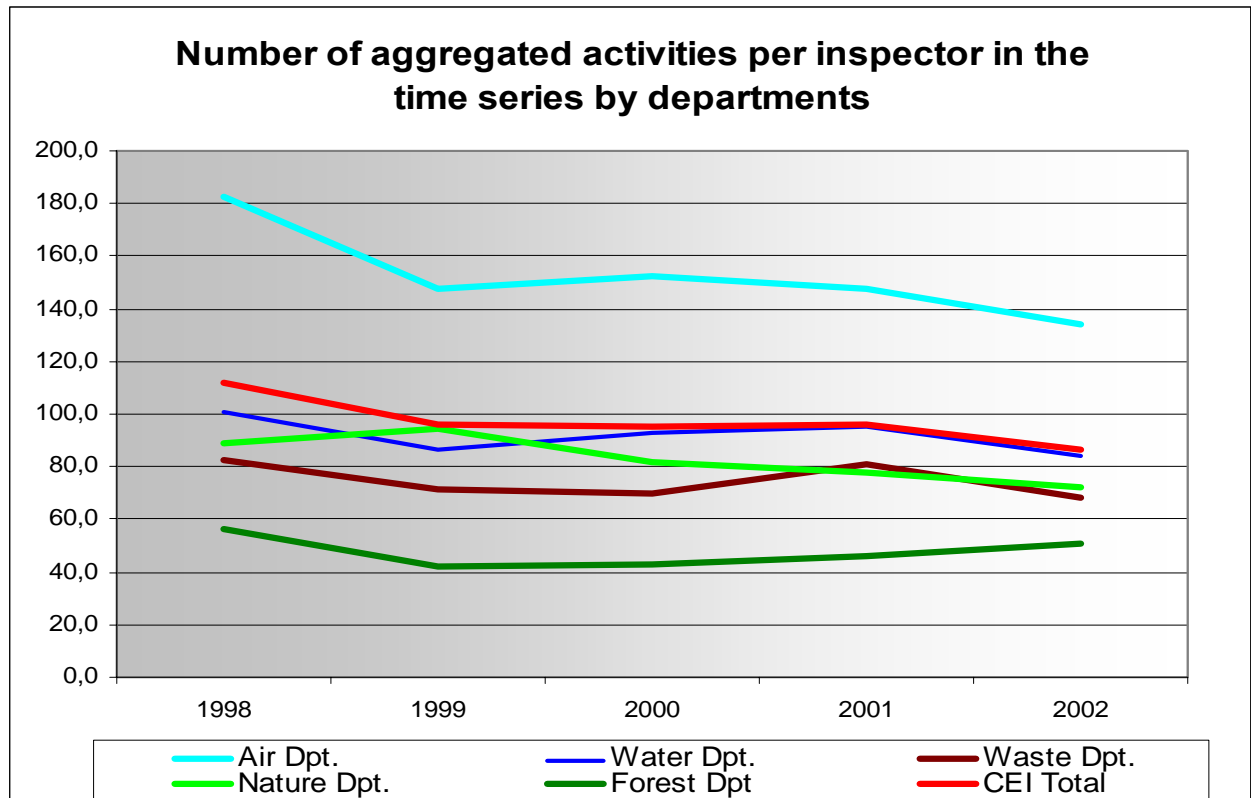


Figure 17

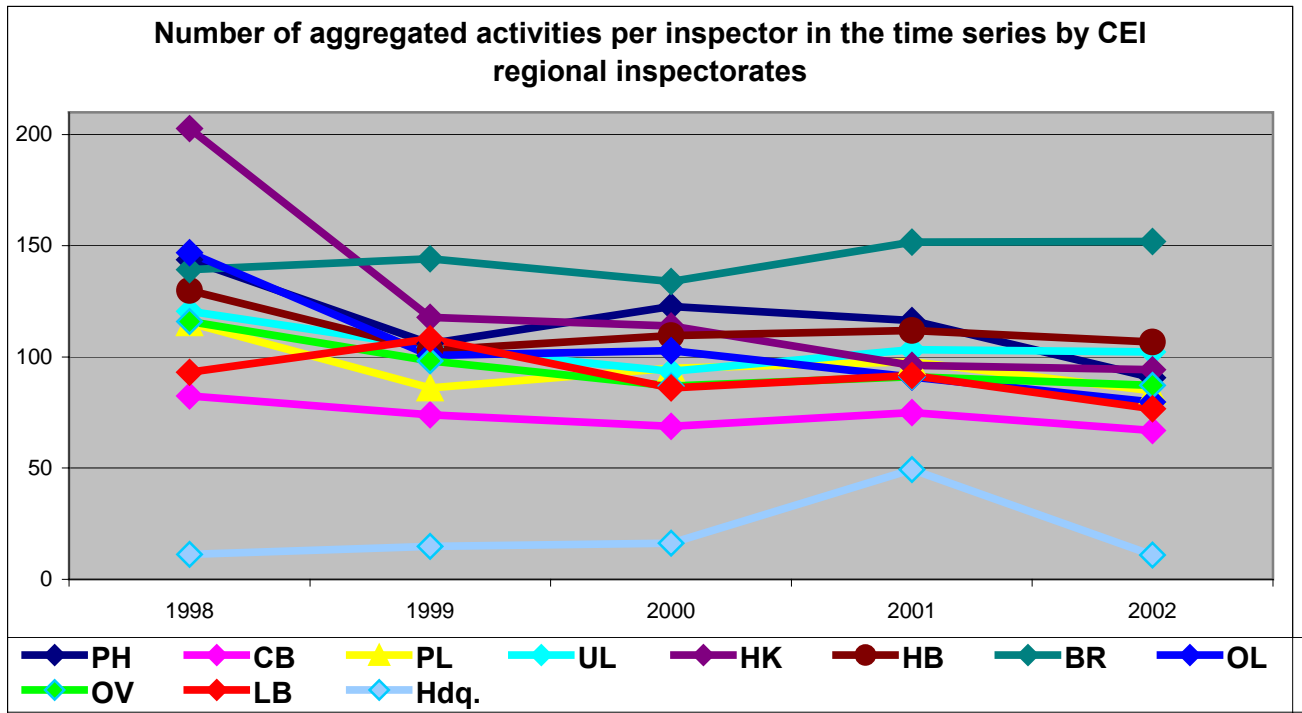


Figure 18

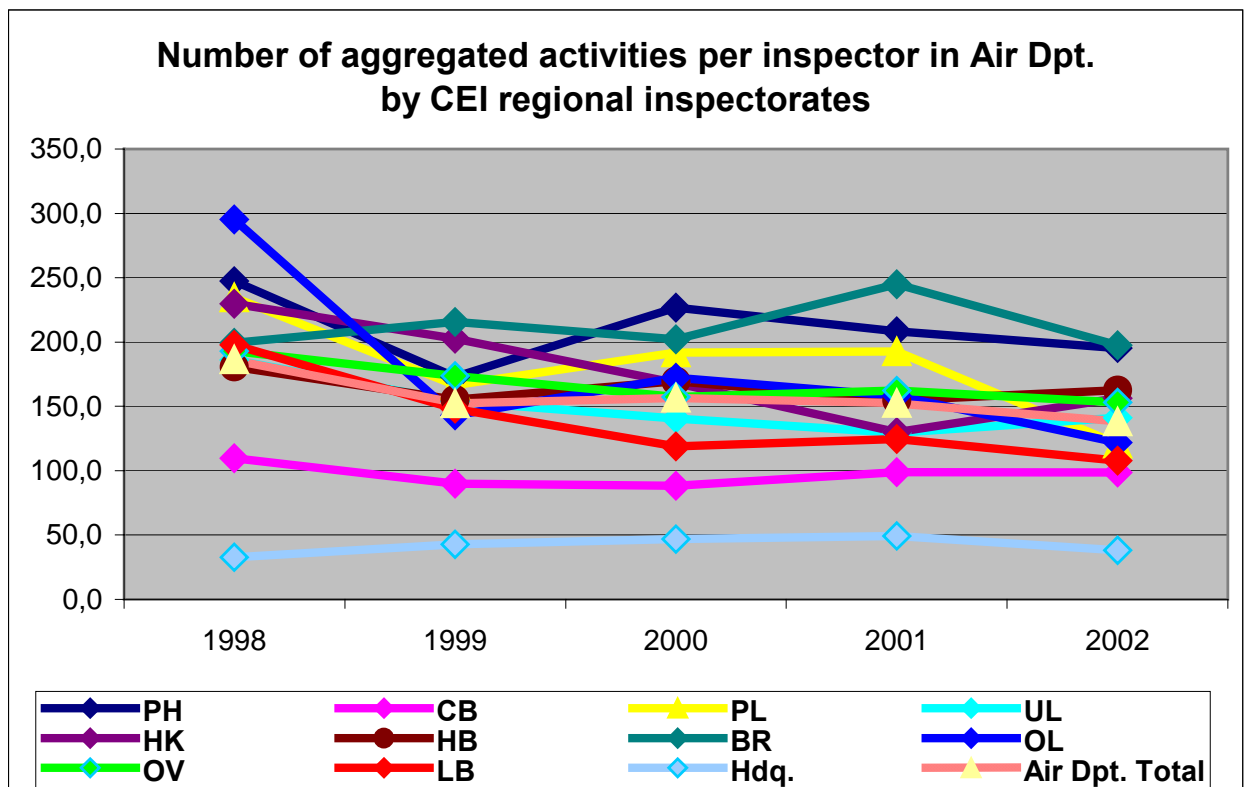


Figure 19

