

Used Indicators at CEI

J. Fencel, J. Svobodová, P. Šremer
Czech Environmental Inspectorate

sremer@cizp.cz



Indicators at CEI

- Basic Information on CEI
- Quantitative and semiquantitative Indicators /input, output indicators
- Probing of New Indicators at CEI
- New proposals



CEI - Basic Information

- The Czech Environmental Inspectorate (CEI) is the supervisory body of the State Administration.
- Mission : protection of the environment through enforcement of environmental law and international commitments.



CEI - Basic Information 2

- Headquarters and 10 regional inspectorates.
- 2003: >650 staff / 428 inspectors
- In 2002 CEI carried out:
 - ▶ 17.774 inspections
 - ▶ ø 42 inspections/inspector
 - ▶ imposed 2.343 penalties,
Σ : 69.086.974 CZK
 - ▶ imposed 836 corrective measures

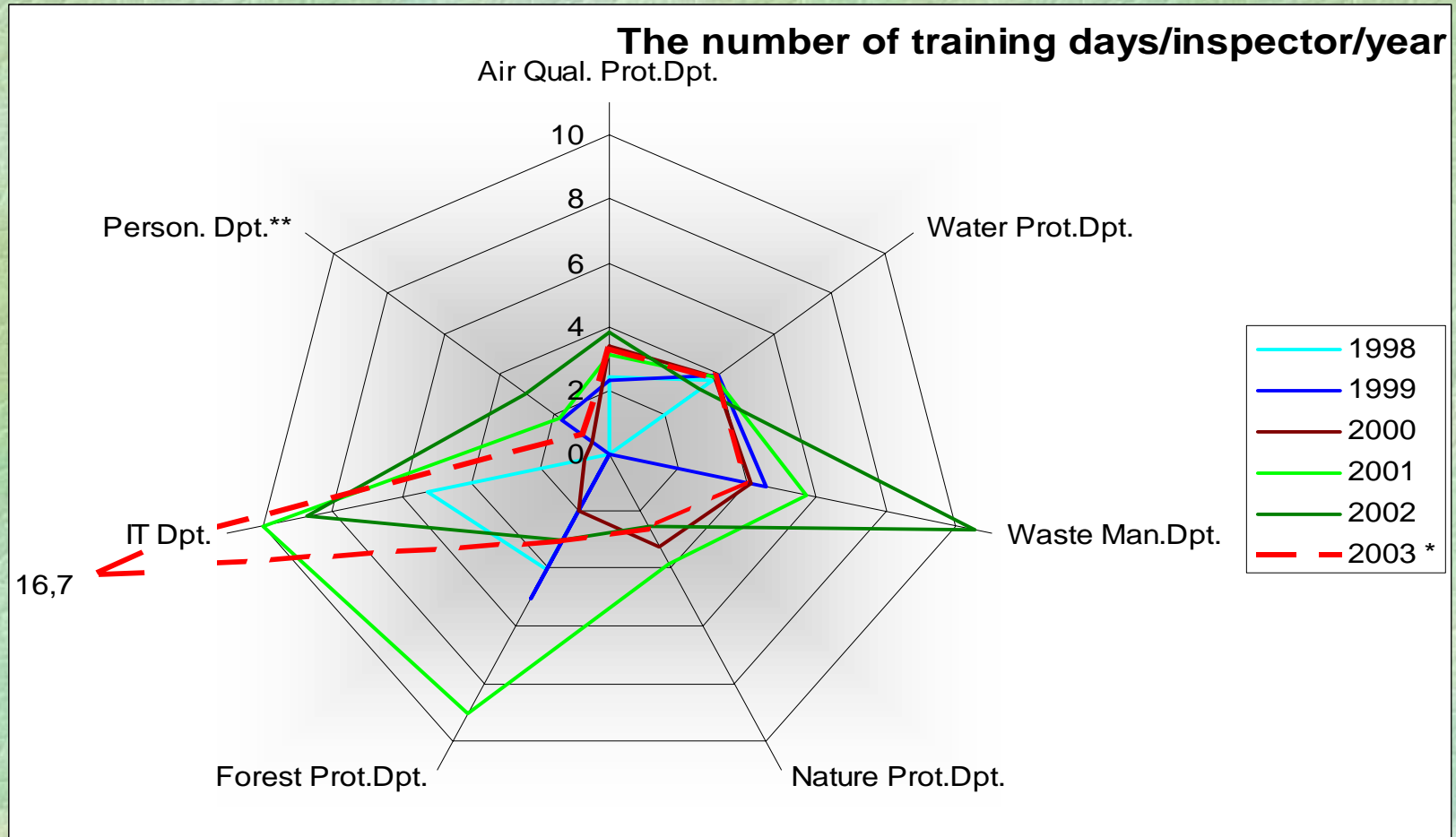


Input Indicators

- Quantitative Indicators
 - Number of inspectors per Dpt., Reg.Insp.
 - Number of trained inspectors per year
- Semi-qualitative Indicators
 - Number of training days/inspector/year
 - Number of foreign business trips per inspector per year

Semi-qualitative CEI Indicators

Figure 1



* until 30.8.2003

** number of training days per inspector organized by Personal Dpt.



Output Indicators

■ Quantitative Indicators

- Structure of CEI activities and its trends
- Total number of inspections according to different environmental media and Regional Inspectorates
- Development of number of revisions and administrative decisions issued
- Administrative decisions of remedial character
- Accidents on waters
- Number of fines and fees

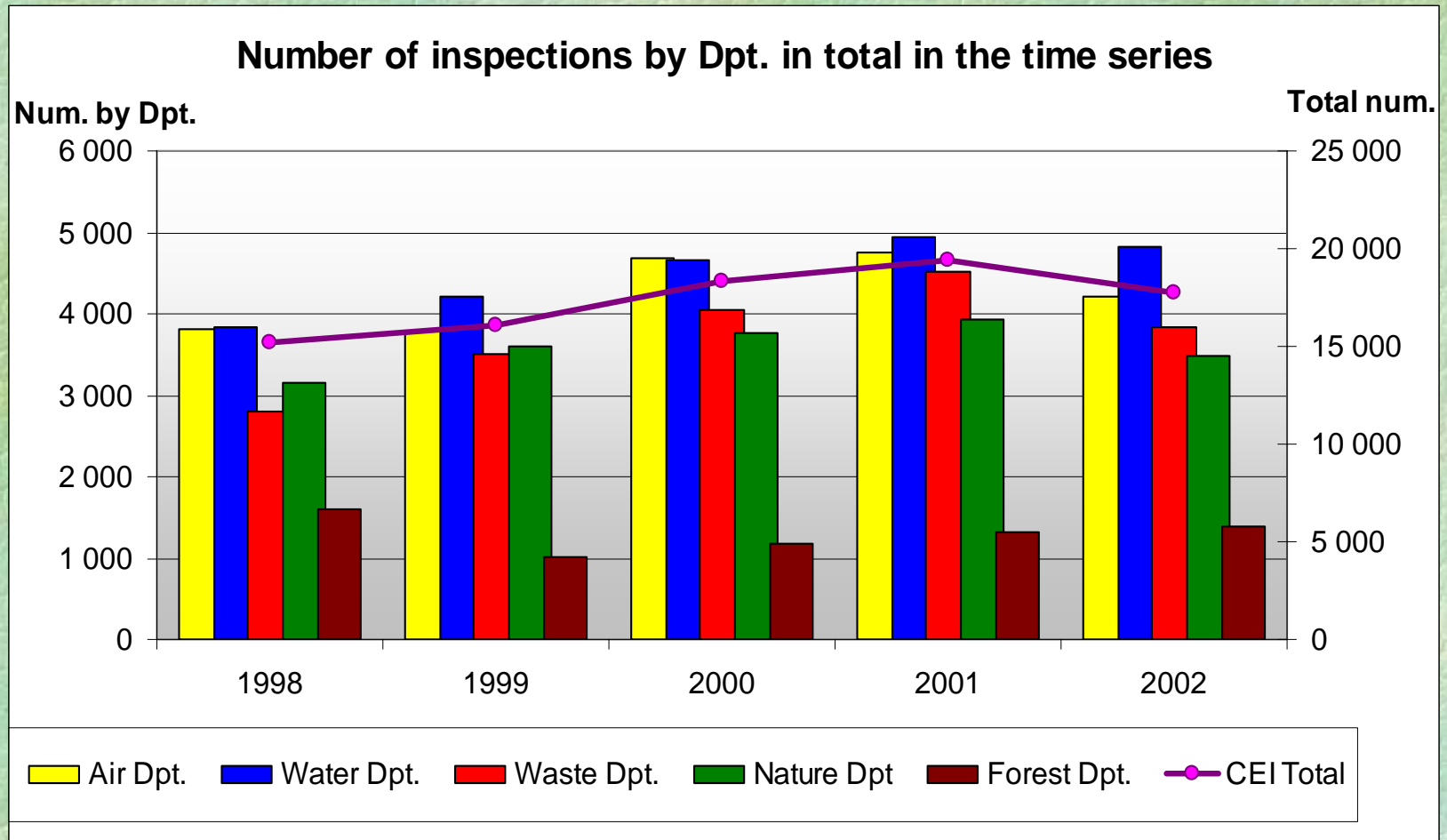


Output Indicators

- Quantitative Indicators 2
 - Trends in number of statements and audits for other authorities
 - Number of requests for information according to particular laws
 - Activity trends in the area of air&water protection, waste/chemical substances
 - Activity trends in nature/forest protection
- Notice: In the last 2 points are included categories : revisions, decisions in administrative procedures, statements for other authorities, solving complaints

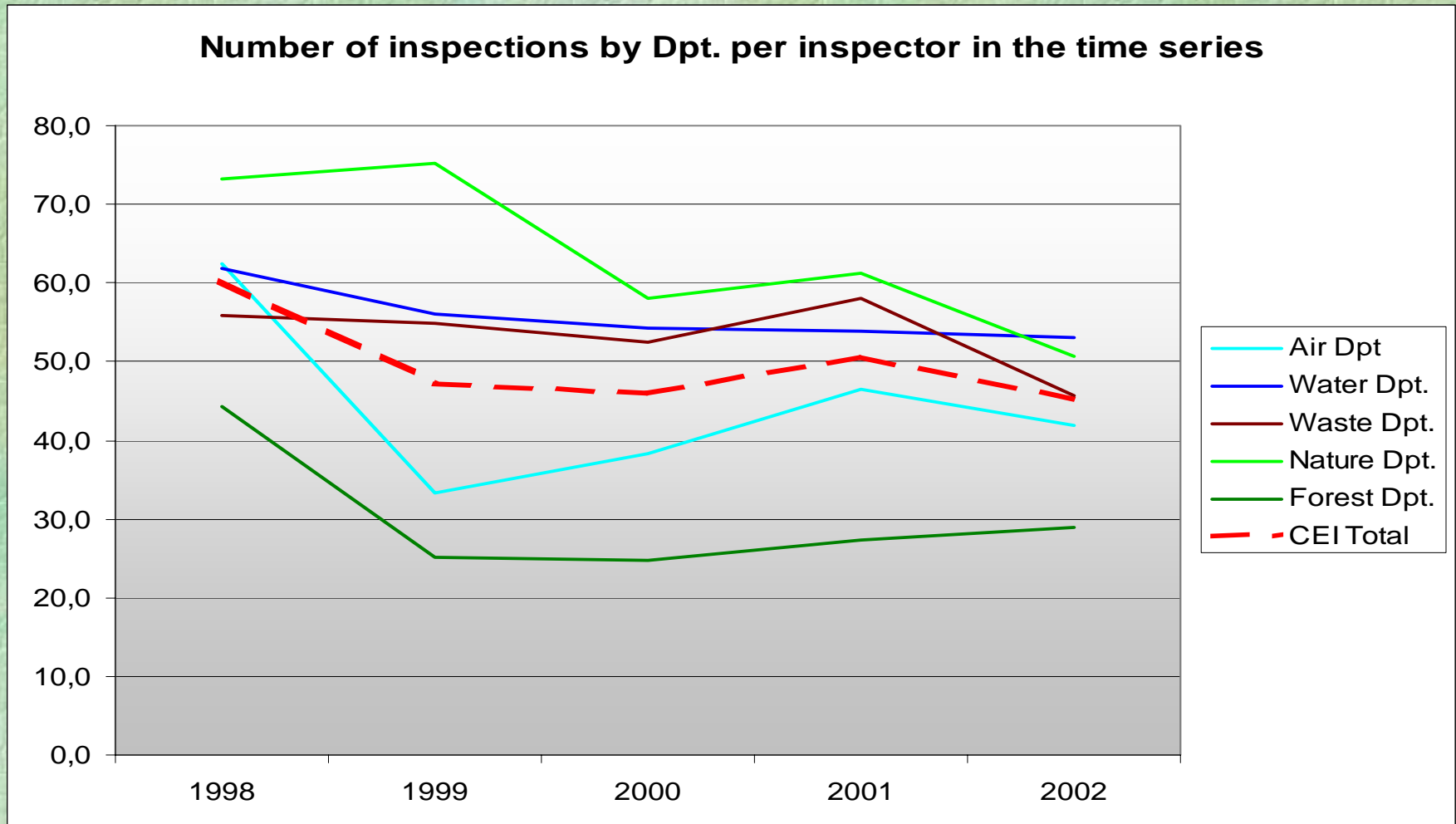
Quantitative CEI Indicators

Figure 2



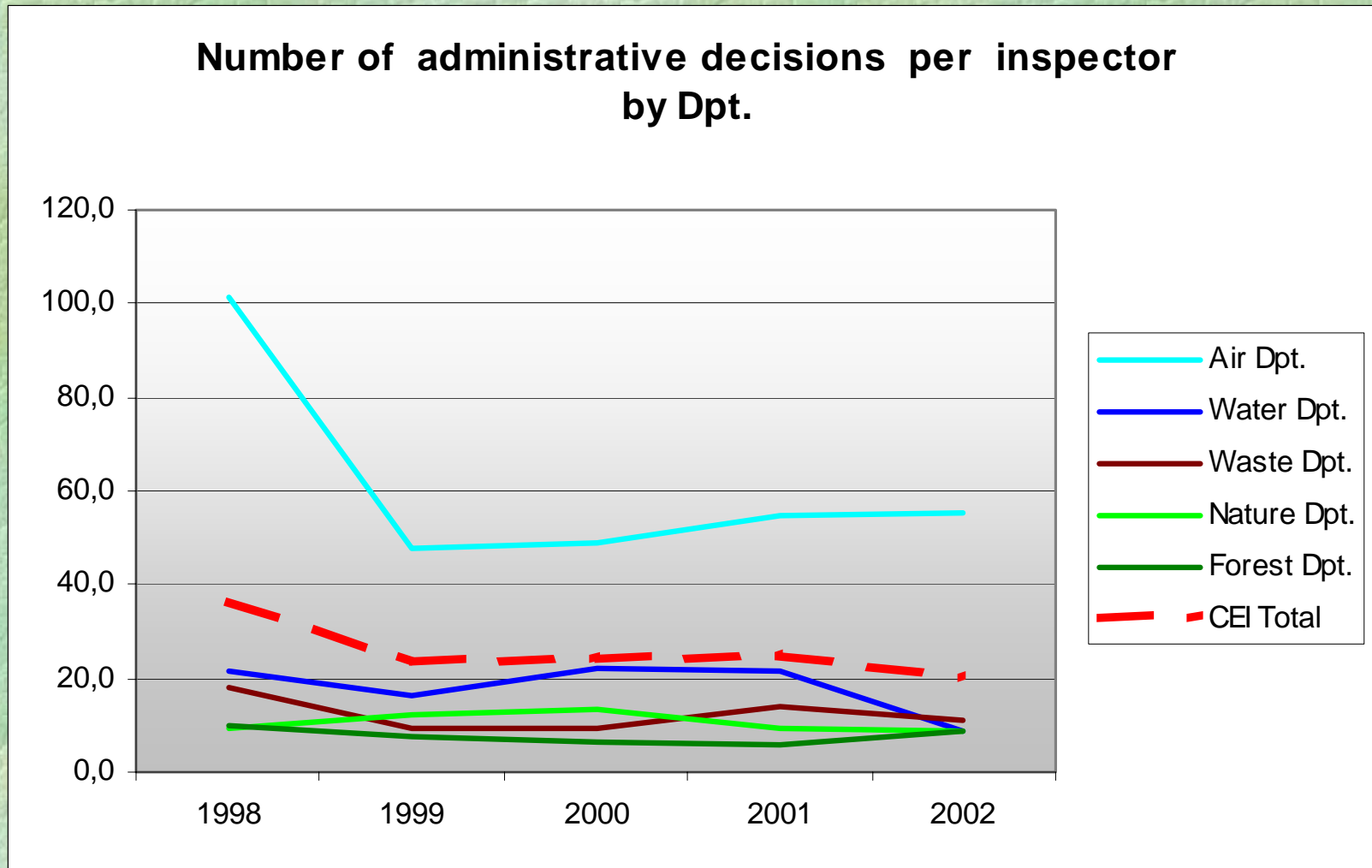
Quantitative CEI Indicators

Figure 3



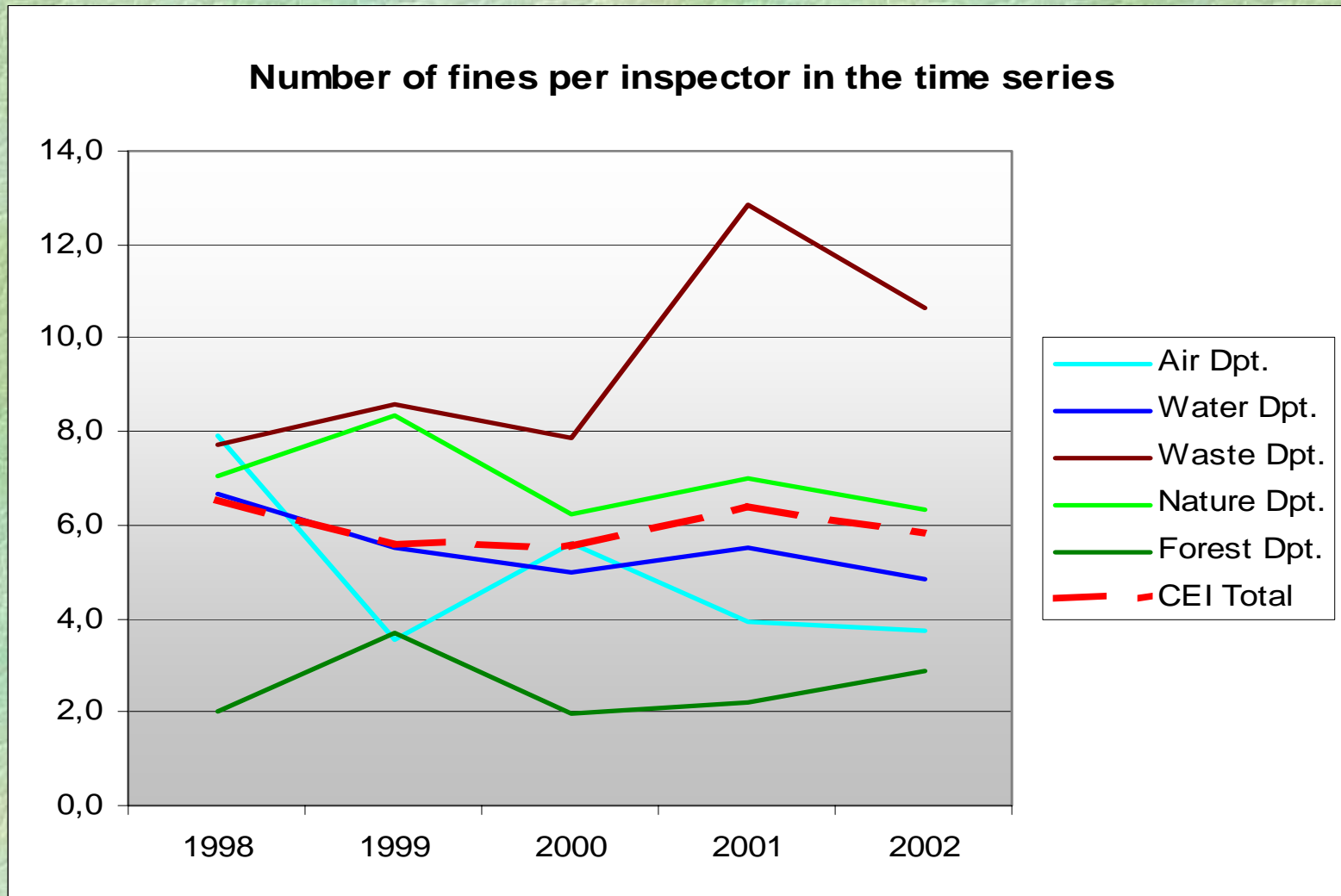
Quantitative CEI Indicators

Figure 4



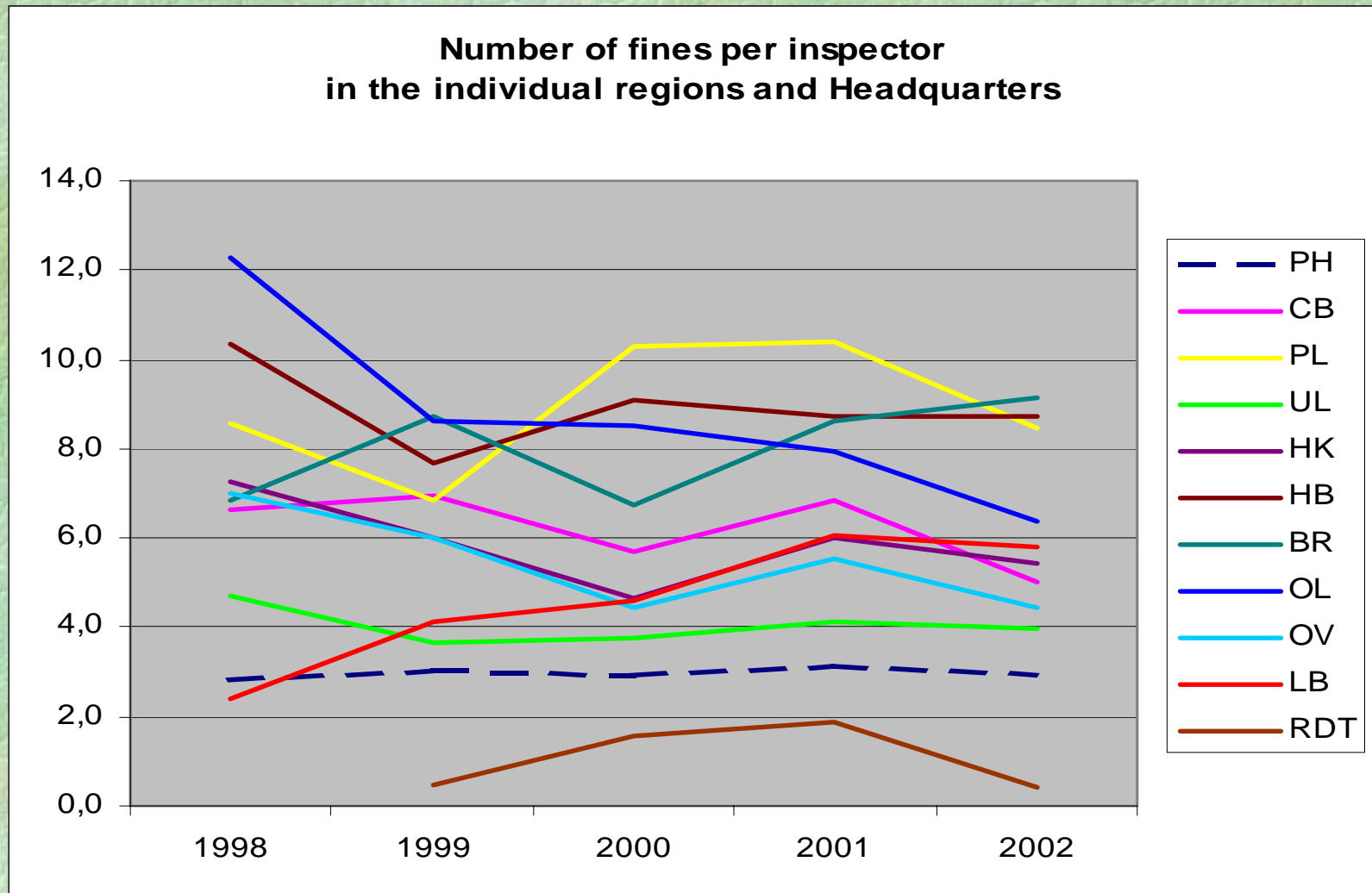
Quantitative CEI Indicators

Figure 5



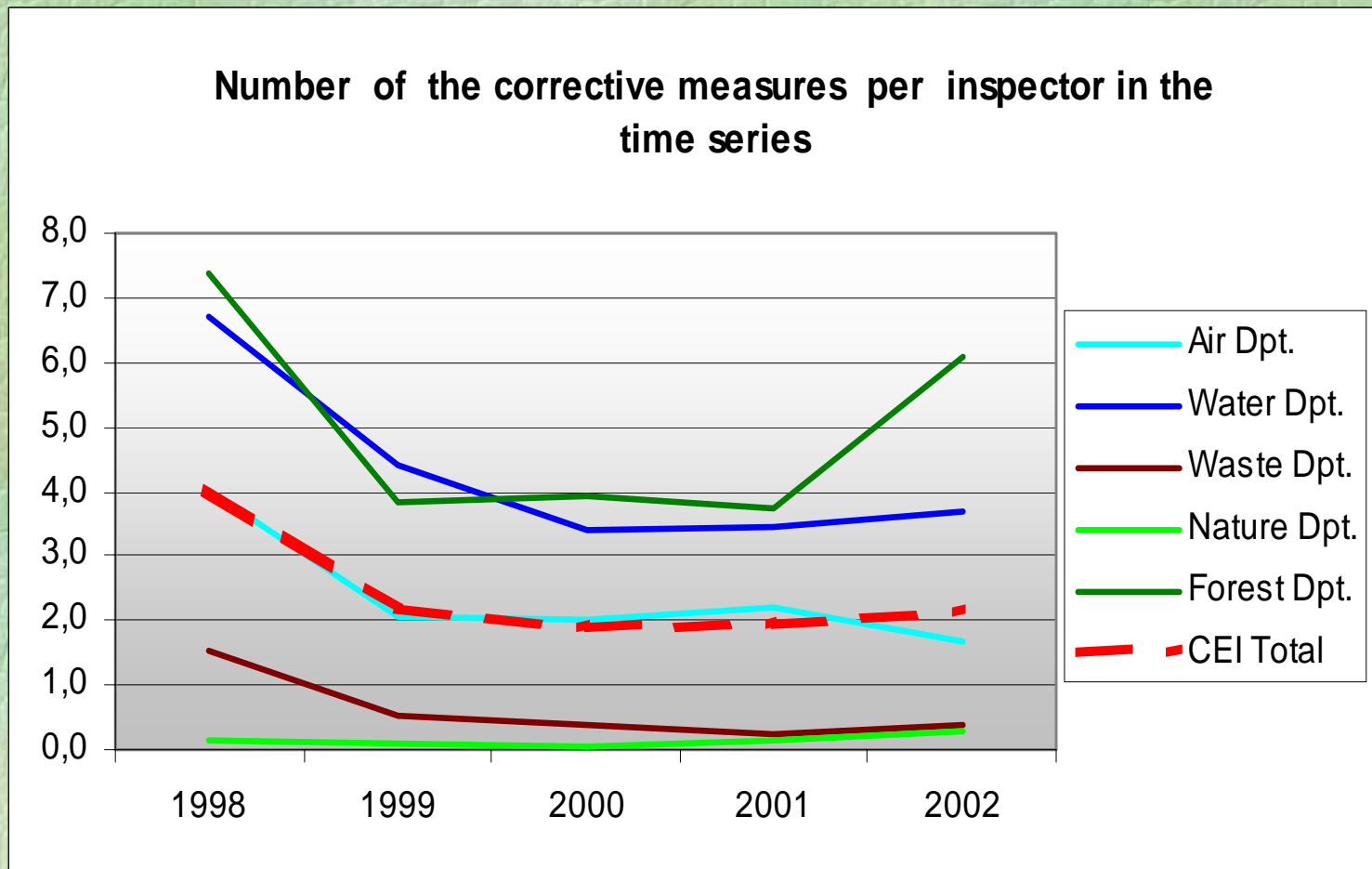
Quantitative CEI Indicators

Figure 6



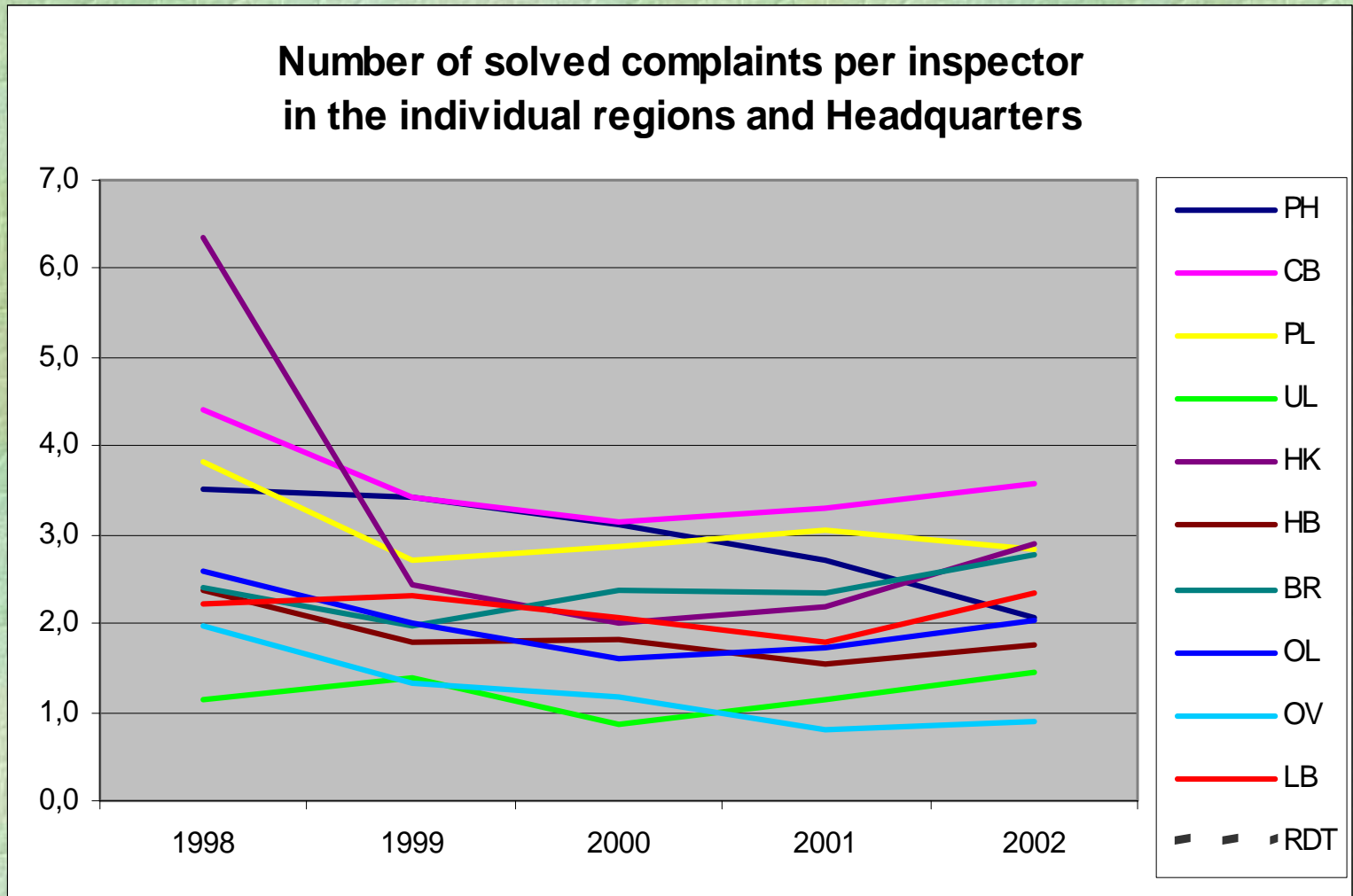
Quantitative CEI Indicators

Figure 7



Quantitative CEI Indicators

Figure 8





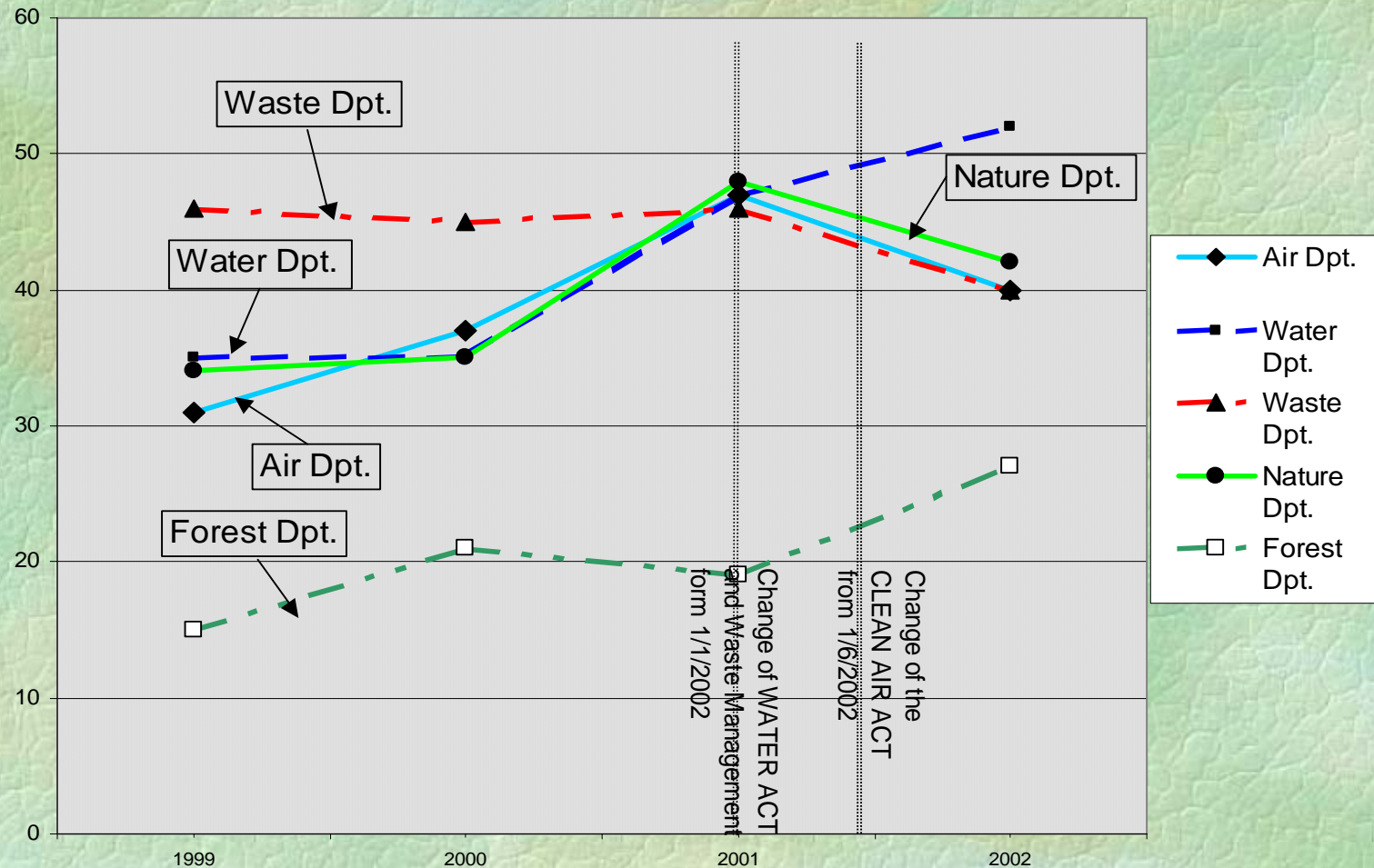
Output Indicators

- Semi-qualitative Indicators
 - Information of CEI to public (number of justified appeals against not giving information)
 - Complaints of public towards CEI and about damages to the environment
 - Number of changed admin. decisions on fines after appeal in relation to original number of appeals
 - Number of overlimited/underlimited emission measurings to total number of measurements

Semi-qualitative CEI Indicators

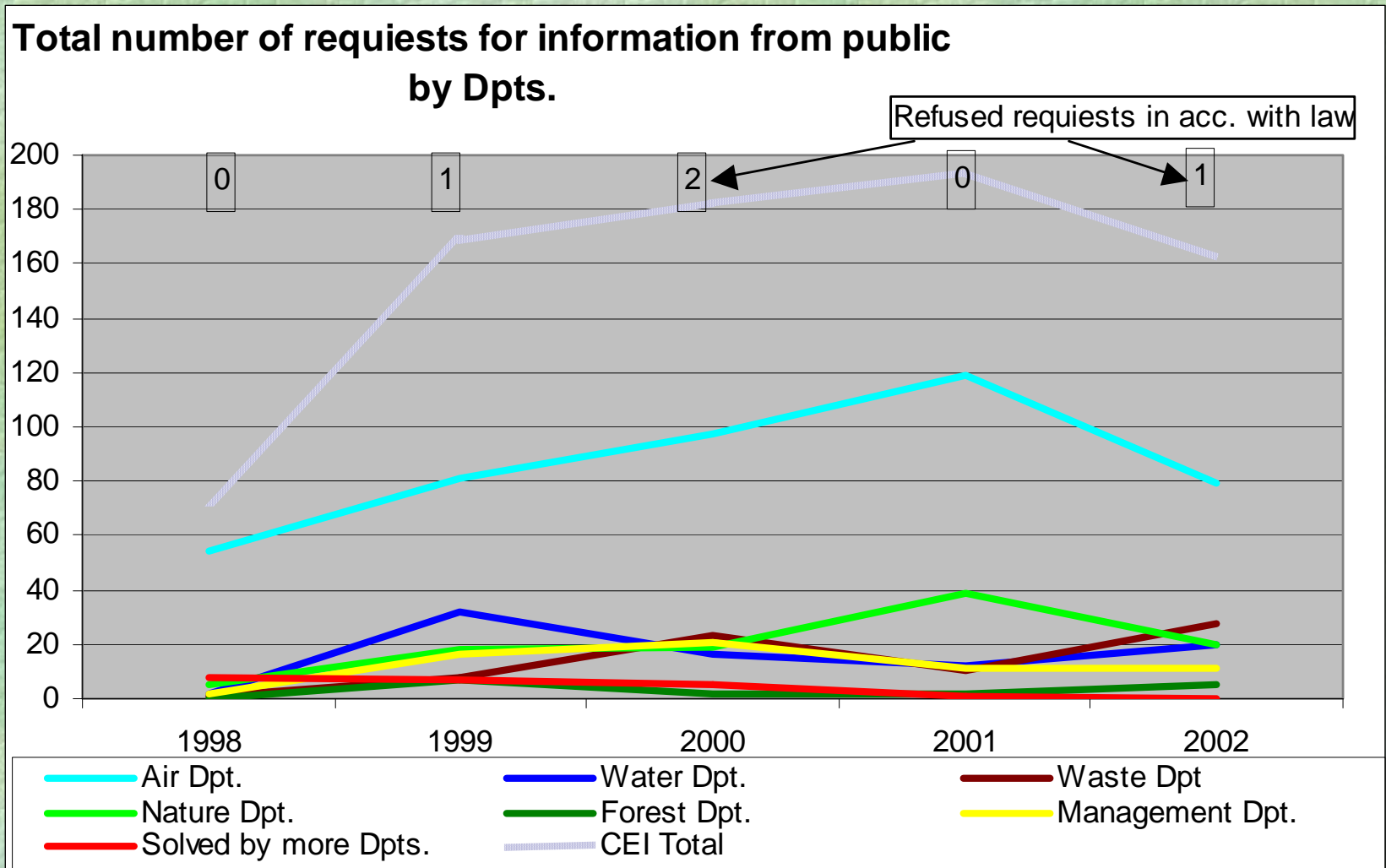
Figure 9

Number of changed admin. decisions on fines after appeal towards total original number of appeal in % at individual departments



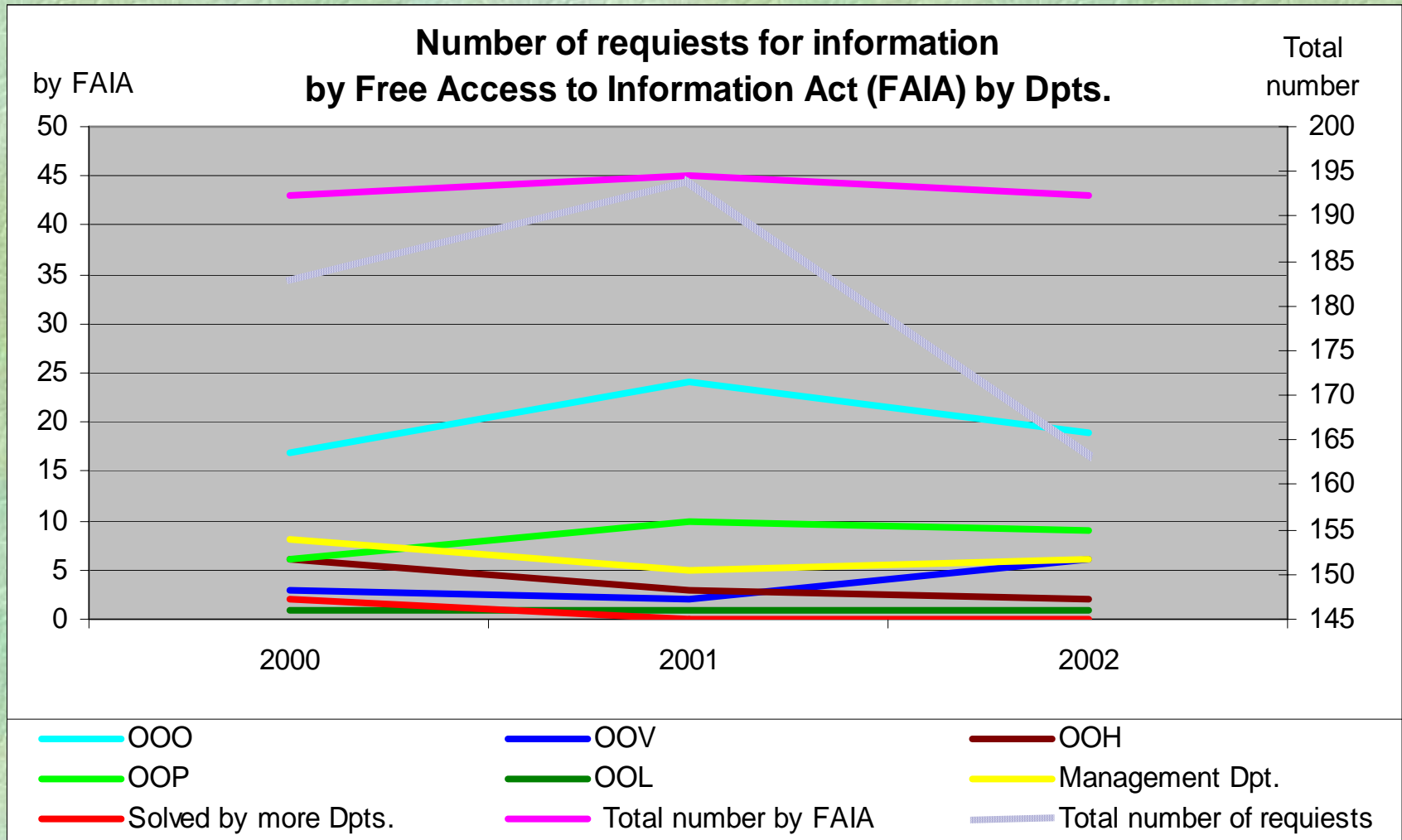
Semi-qualitative CEI Indicators

Figure 10



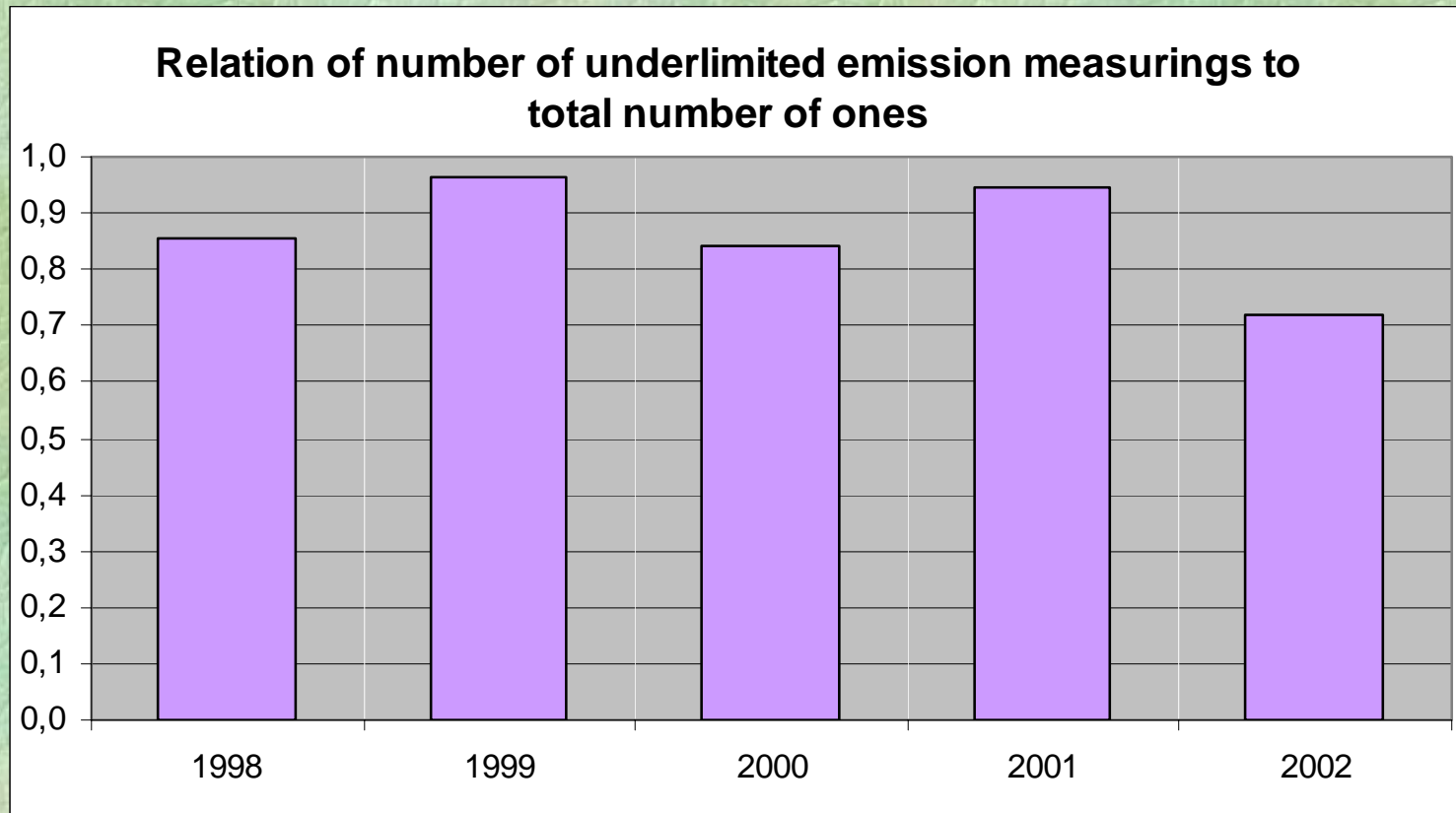
Semi-qualitative CEI Indicators

Figure 11



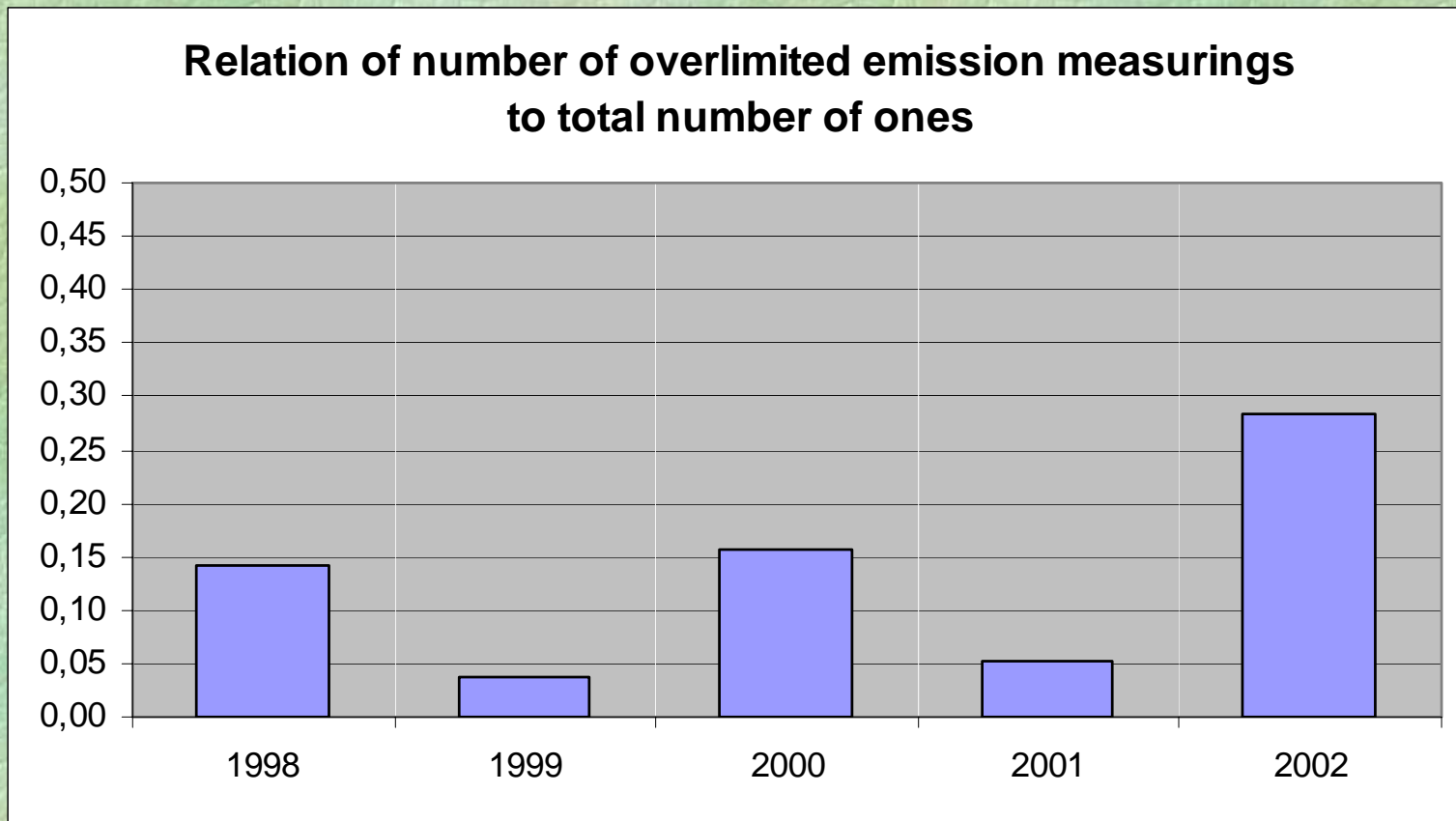
Semi-qualitative CEI Indicators

Figure 12



Semi-qualitative CEI Indicators

Figure 13



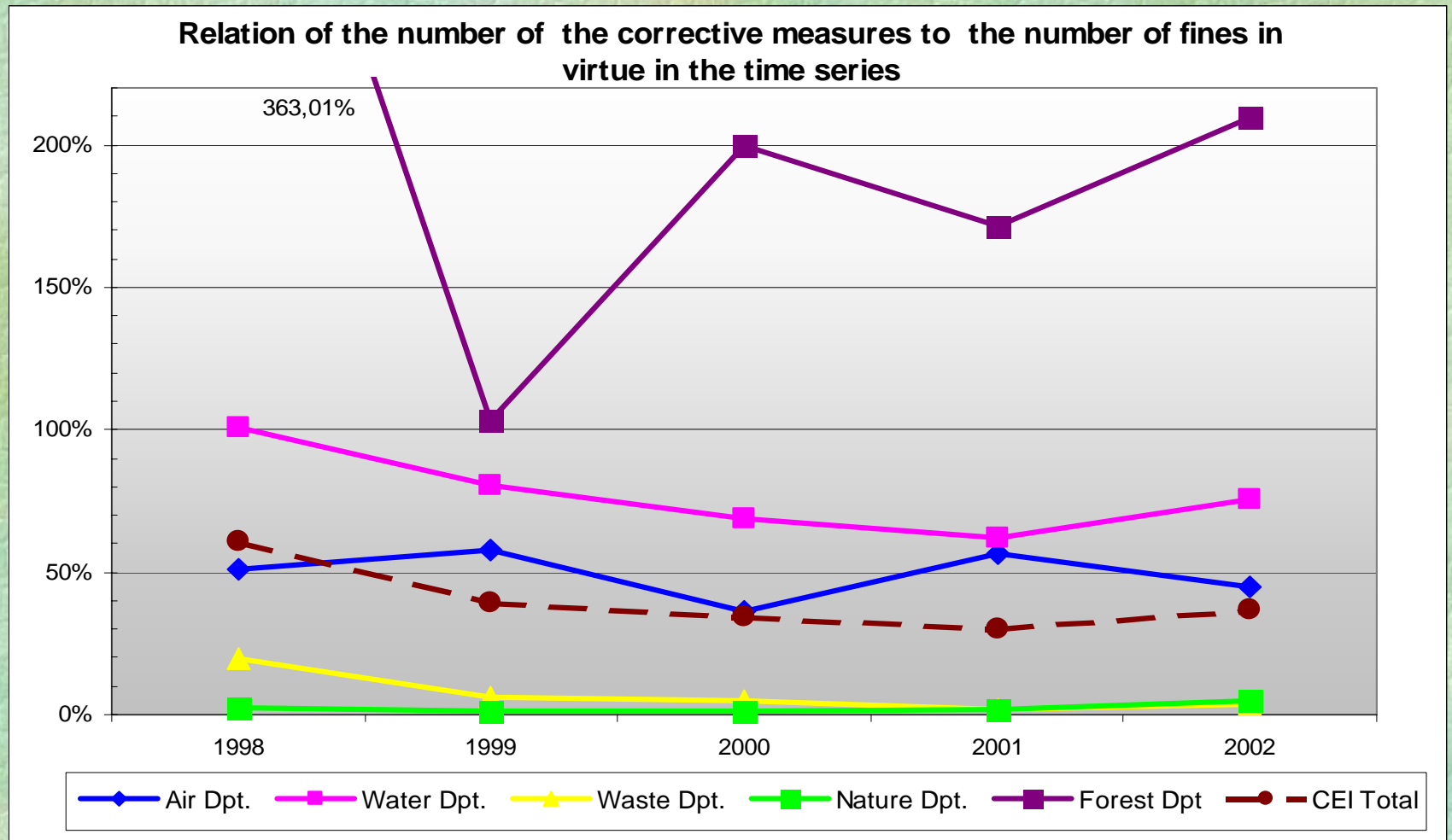


Probing of New Indicators at CEI

- Relation of the corrective measures to the number of fines in the time series acc. to:
 - departments of CEI
 - individual regional inspectorates of CEI

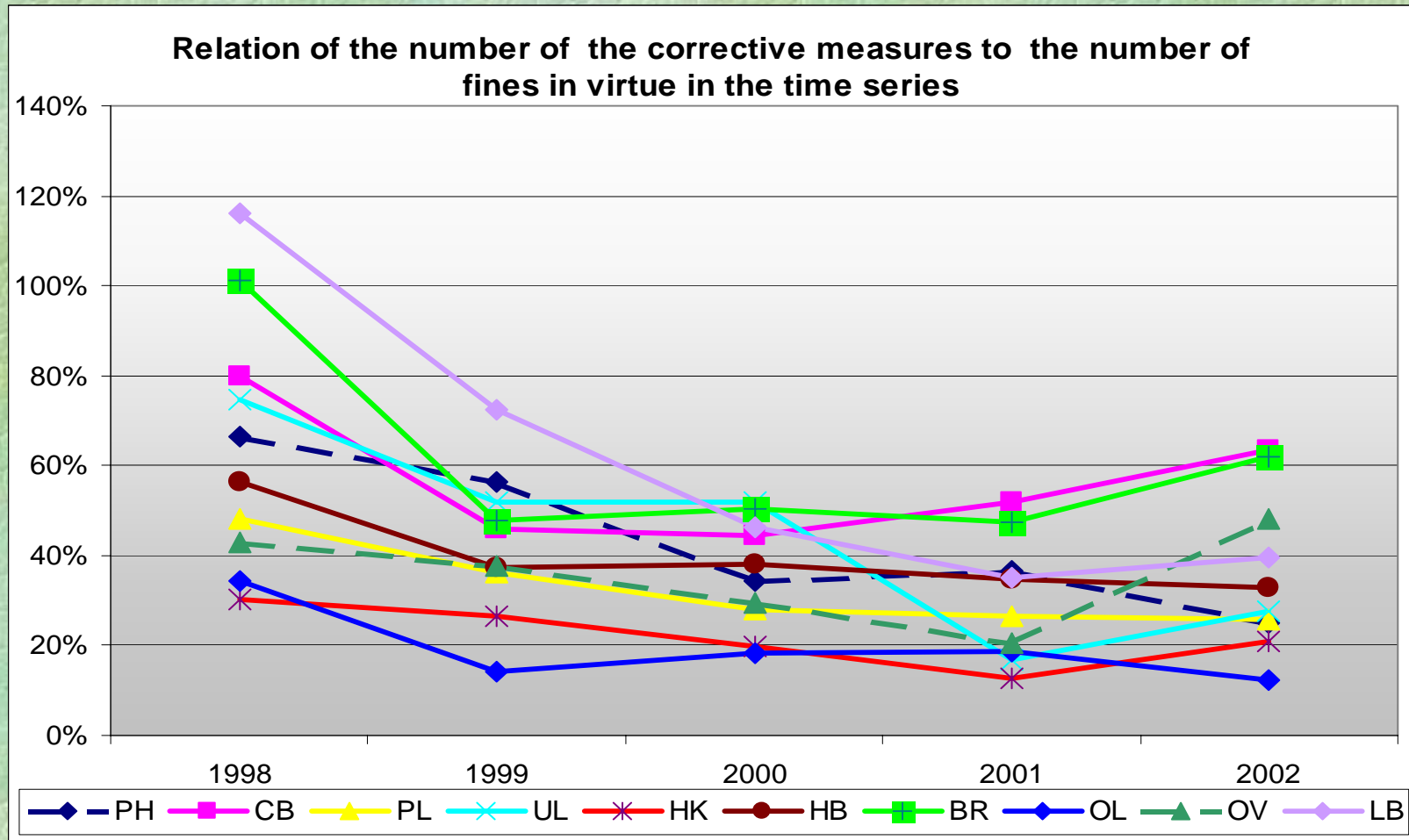
Semi-qualitative CEI Indicators

Figure 14



Semi-qualitative CEI Indicators

Figure 15





Semi-Aggregated Indicators

- This type of indicators express effort to create (generate) at least ones, as lowest degree to complex assessment of CEI activities
- Indicator GIP - Gross Inspectorate Product as very simplified analogy of GDP or GNP



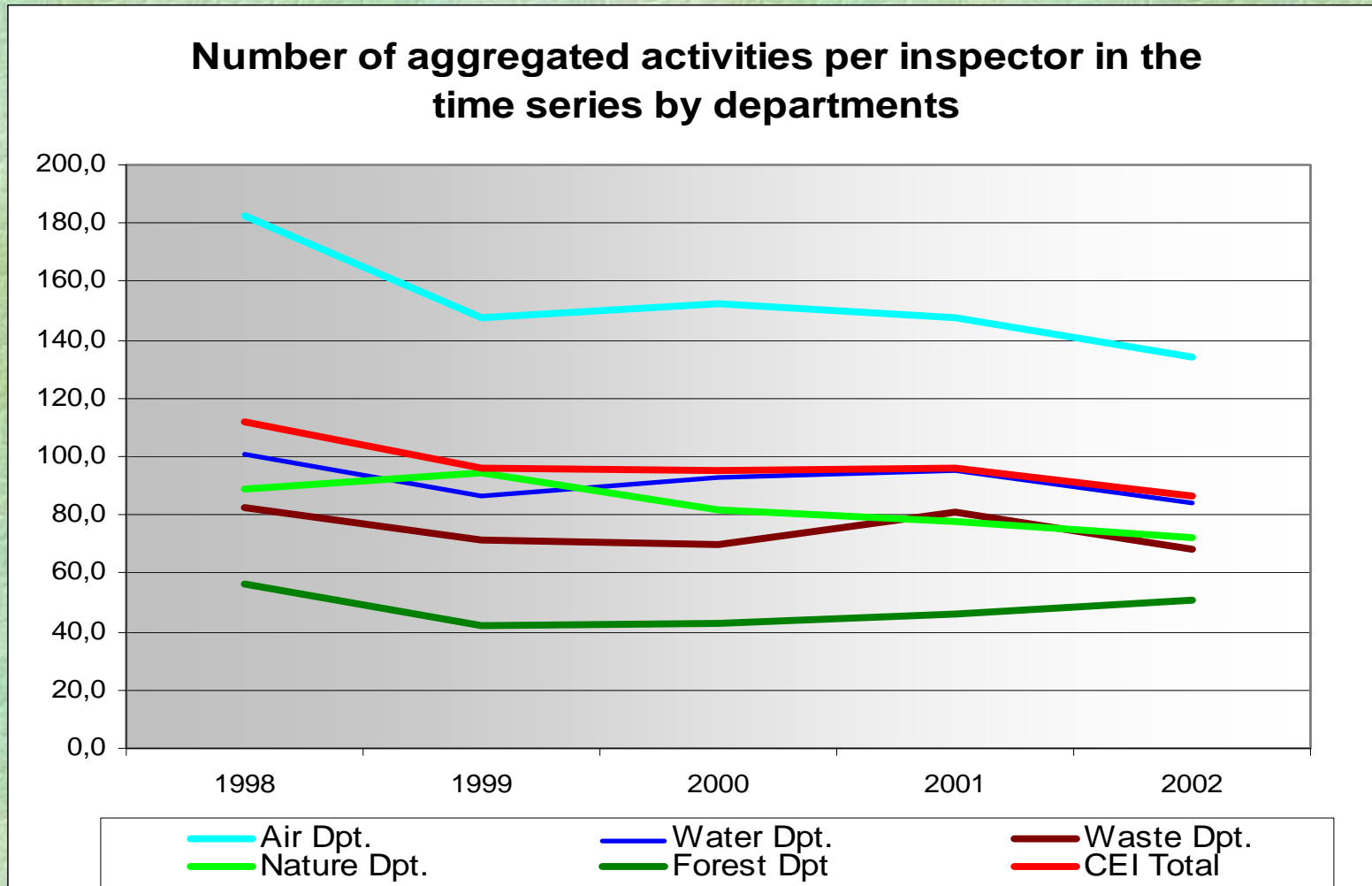
„Gross Inspectorate Product“ - GIP

Aggregated CEI dates of:

- Number of Inspections
- Number of Administrative Decisions
- Statements for other bodies
- Solution of complaints

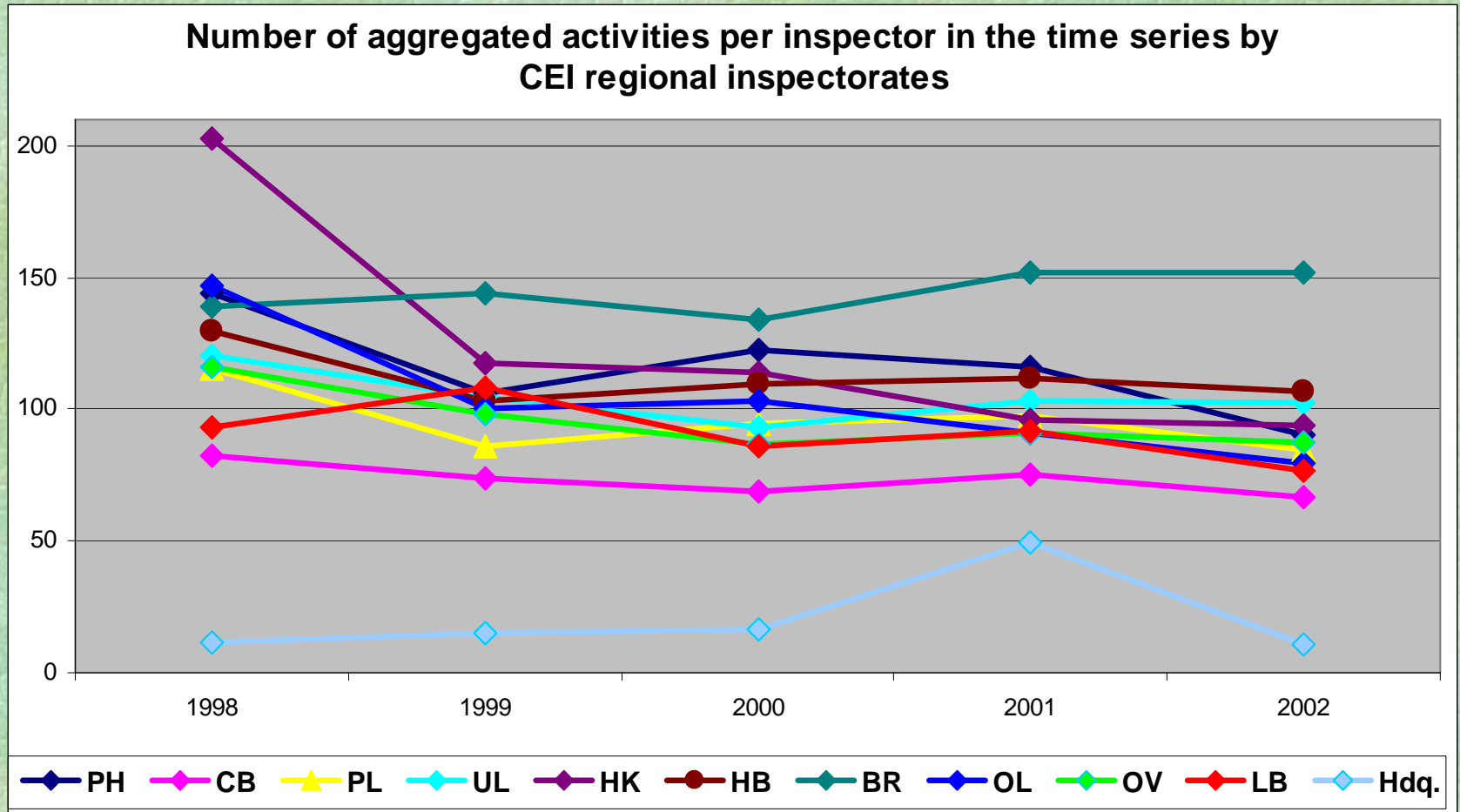
Aggregated indicator: GIP/Inspector

Figure 16



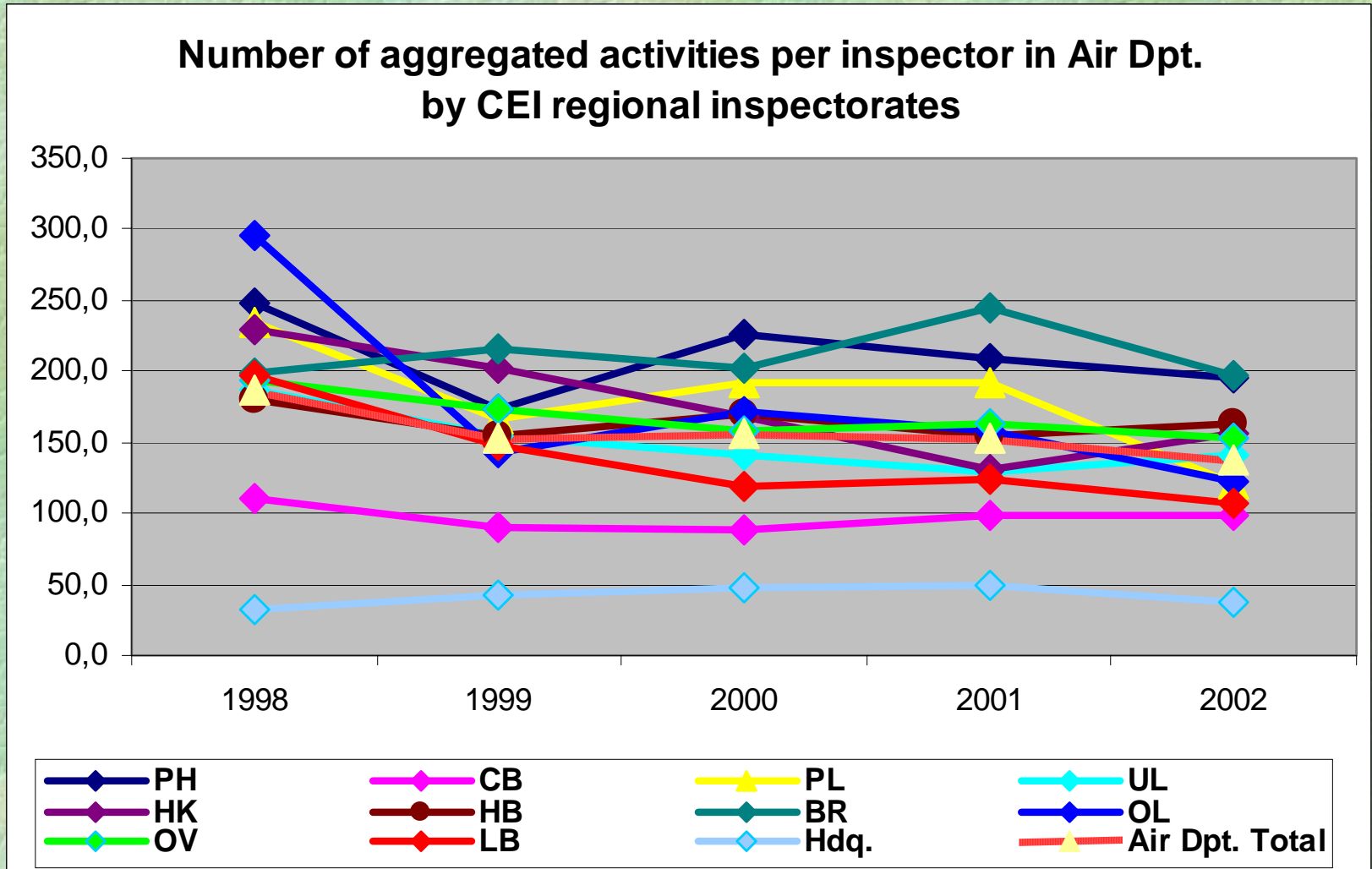
Aggregated indicator: GIP/Inspector

Figure 17



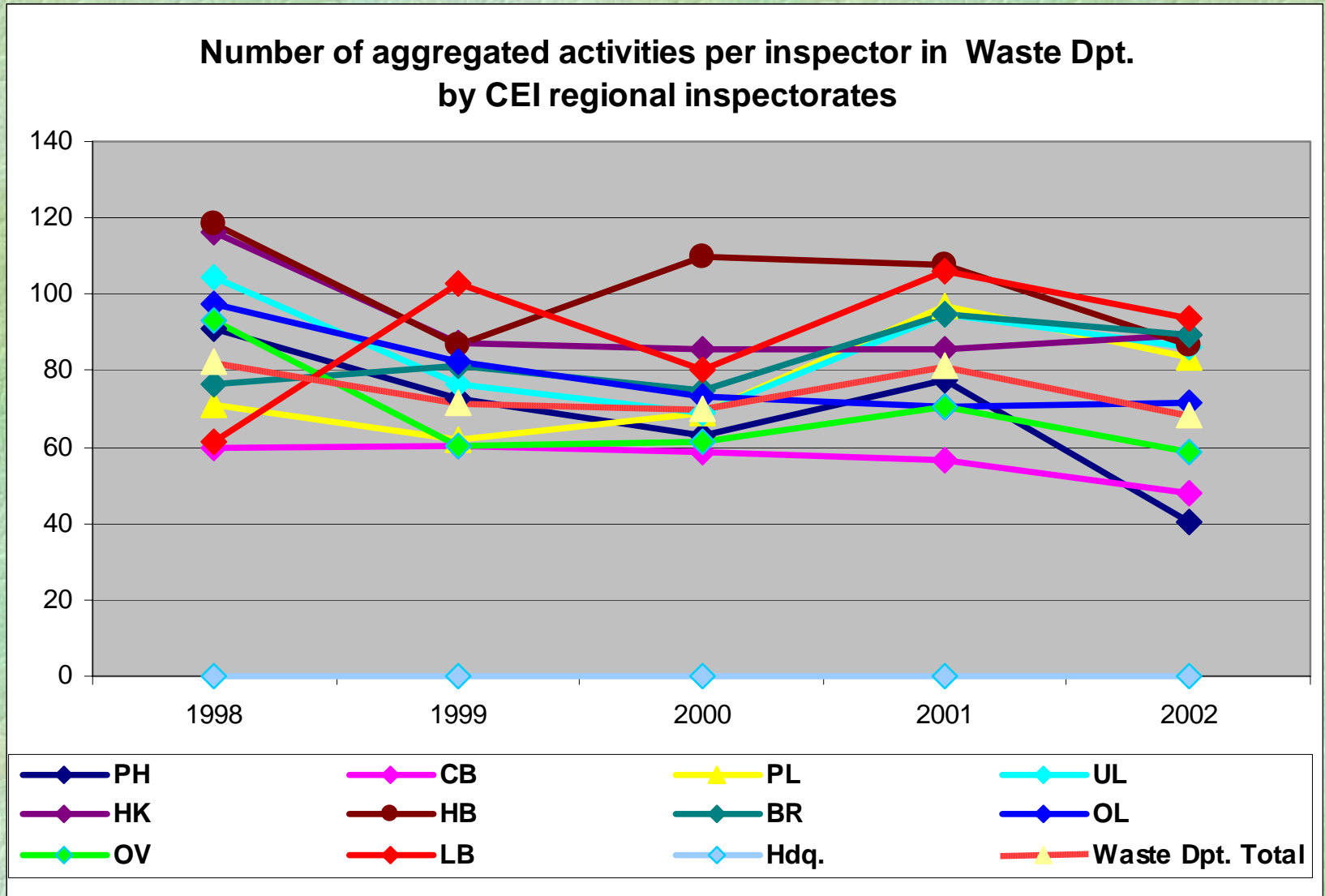
Aggregated indicator: GIP/Inspector

Figure 18



Aggregated indicator: GIP/Inspector

Figure 19





New proposals

- Establishment and Acceptance of Common Performance Indicators
- GIP* (Gross Inspectorate Product) ?
- Realization of Common Performance Indicators in Pilot Countries

■ * Aggregated product, similiary as GNP