

President's Initiative Against Illegal Logging

“...a foundation for future actions to eliminate illegal logging, corruption in the forest sector, and the sale - including for export - of illegally harvested timber products. “

-- President Bush on July 28, 2003



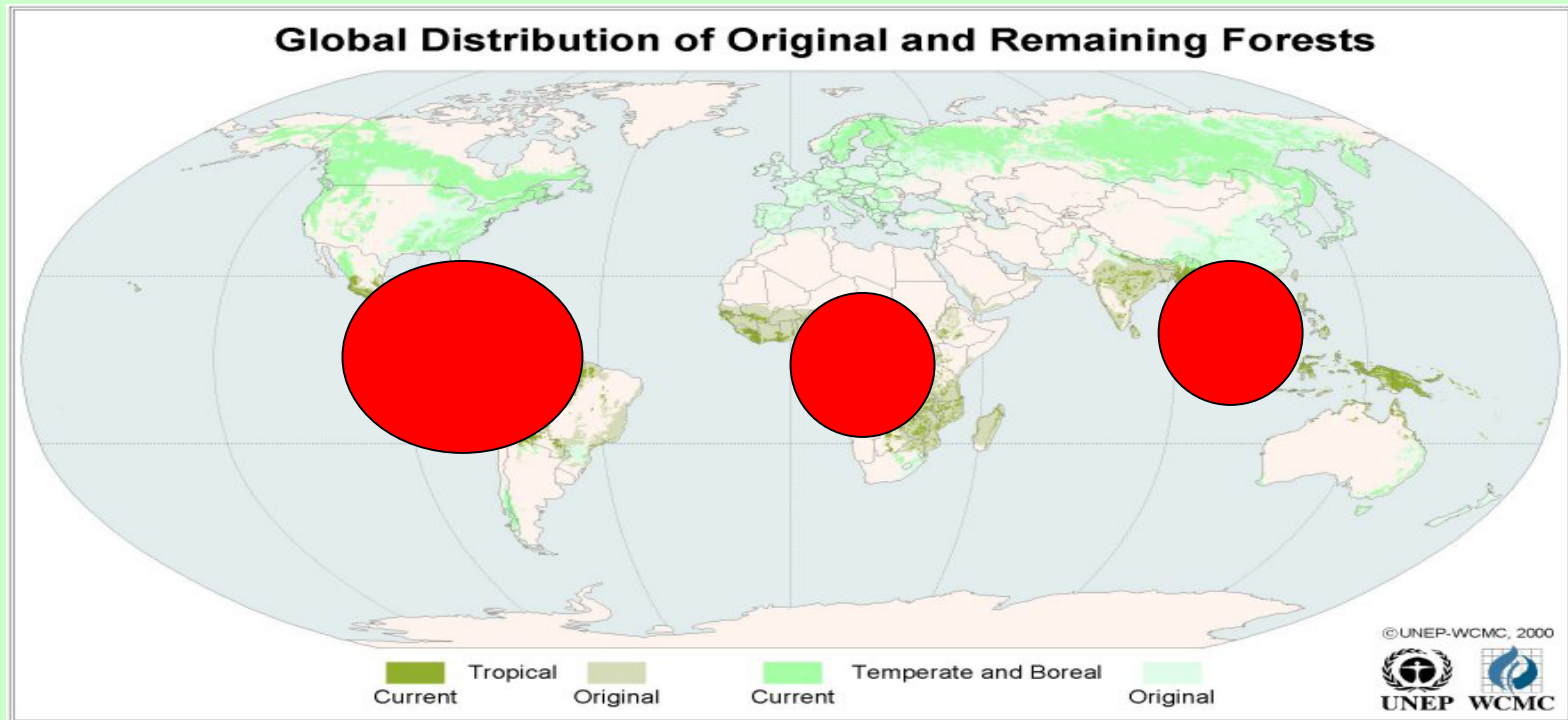
Photo (L to R) AF&PA W. Henson Moore, Secretary Powell, WWF Kathryn Fuller, Conservation International Russell Mittermeier, Assistant Secretary of State John Turner

President's Initiative Against Illegal Logging



OBJECTIVE: Assist developing countries to combat illegal logging, the sale, including for export, of illegally harvested timber products, and corruption in the forest sector.

President's Initiative Against Illegal Logging



GEOGRAPHIC FOCUS: The Initiative will focus initially on three critical regions: Congo Basin, Amazon Basin/Central America and South/South East Asia.

U.S. Leadership in Action Against Illegal Logging

The United States has been a leader in raising international awareness of the devastating global problem of illegal logging and identifying actions to address it, notably through the G-8, regional initiatives such as the South Asia and Africa Ministerial Conferences on Forest Law Enforcement and Governance (FLEG Processes), and bilateral actions. The **President's Initiative Against Illegal Logging** builds on these ongoing efforts.

Other countries, including the United Kingdom, Indonesia and the European Community have also been leaders in initiating significant actions against illegal logging.

President's Initiative Against Illegal Logging

Global Actions

- Support USAID Sustainable Forest Products Global Alliance
- Co-finance ITTO projects to improve timber trade data
- Assessment of international timber markets to identify critical factors related to illegal logging
- Develop bilateral cooperation to combat illegal logging with exporting and importing countries and interested stakeholders

President's Initiative Against Illegal Logging

Four Key Strategies

- Good Governance
- Community-based Actions
- Technology Transfer
- Harnessing Market Forces

President's Initiative Against Illegal Logging

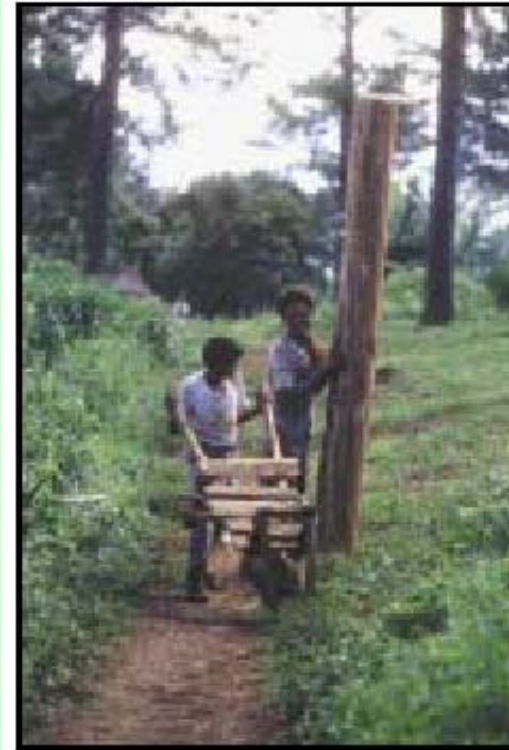
Funding

Total funding to implement the actions initiated in FY 2003 under the Initiative was **\$15 million**. Several of the actions are multi-year projects.

President's Initiative Against Illegal Logging

Good Governance

Building country capacity to establish and strengthen legal regimes and enforcement of laws affecting forest management, especially those aimed at illegal logging



FAO Image, G. Bizzari

President's Initiative Against Illegal Logging

Community-based Actions

Enhancing community involvement in forest governance and related wildlife issues



President's Initiative Against Illegal Logging

Technology Transfer

Developing integrated monitoring systems and building in-country capacity to monitor forest activity and compliance with laws, including using remote sensing and ground-based technologies to monitor changes in forest conditions



President's Initiative Against Illegal Logging

Harnessing Market Forces

Promoting good business practices, transparent markets and legal trade, including country capacity to implement obligations under CITES



Made with mahogany: This Honduran artisan earns his living by working mahogany, but his livelihood will be threatened if the resource is over-exploited. *Photo: J. Leigh /ITTO Tropical Forest Update*

President's Initiative Against Illegal Logging

- ITTO sponsors Pucallpa Workshop to address capacity-building issues related to CITES implementation and mahogany trade in May 2004.
- OES grant to International Wood Products Association to work with industry in the range states to address issues from Pucallpa Workshop.
- Plans for Russia to host *EURASIA* FLEG Ministerial Conference by 2006.
- Begin multilateral discussions on possible FLEG in the Western Hemisphere for initially Mesoamerica and Andean countries.

President's Initiative Against Illegal Logging

Actions in the Amazon Basin/Central America

- Implementation of CITES Appendix II listing for big leaf mahogany
- Assessment and testing of forest monitoring technologies
- Technical assistance and training for forest sector capacity building
- Strengthen protected area management
- Initiate Latin America regional forest law enforcement and governance ministerial conference process

President's Initiative Against Illegal Logging

Actions in South/Southeast Asia

- Community-based forest management and protection
- Forest sector eco-governance, transparency and accountability
- Address illegal logging threatening orangutan habitat
- Follow-up process to 2001 South Asia Ministerial Conference on Forest Law Enforcement and Governance

**Forest Law Enforcement and Governance:
East Asia Ministerial Conference
*September 11 – 13, 2001, Bali, Indonesia***

Illegal logging, associated illegal trade, wildlife poaching, and corruption are increasingly recognized and acknowledged threats to forest resources world-wide. This conference marked the culmination of a series of earlier consultations, conferences and national initiatives focused on these issues in East Asia and seeks to facilitate an exchange of experience and views, disseminate technical knowledge, and foster strong political commitment and support at the national, regional, and international levels.

President's Initiative Against Illegal Logging

Actions in the Congo Basin

- Integrated remote sensing and ground-based monitoring
- Enhanced training and capacity building
- Reduced impact logging techniques
- Africa Forest Law and Governance Ministerial Conference

A photograph of a tropical river scene. The river flows through a dense forest of tall palm trees and other tropical plants. A person is visible in a small boat on the water. The scene is captured in a slightly dim, natural light, possibly during the golden hour. The text 'Congo Basin Forest Partnership' is overlaid on the left side of the image in a white, serif font.

Congo

Basin

Forest

Partnership

Sustainable forest management: Making it happen

Congo Basin Forest Partnership

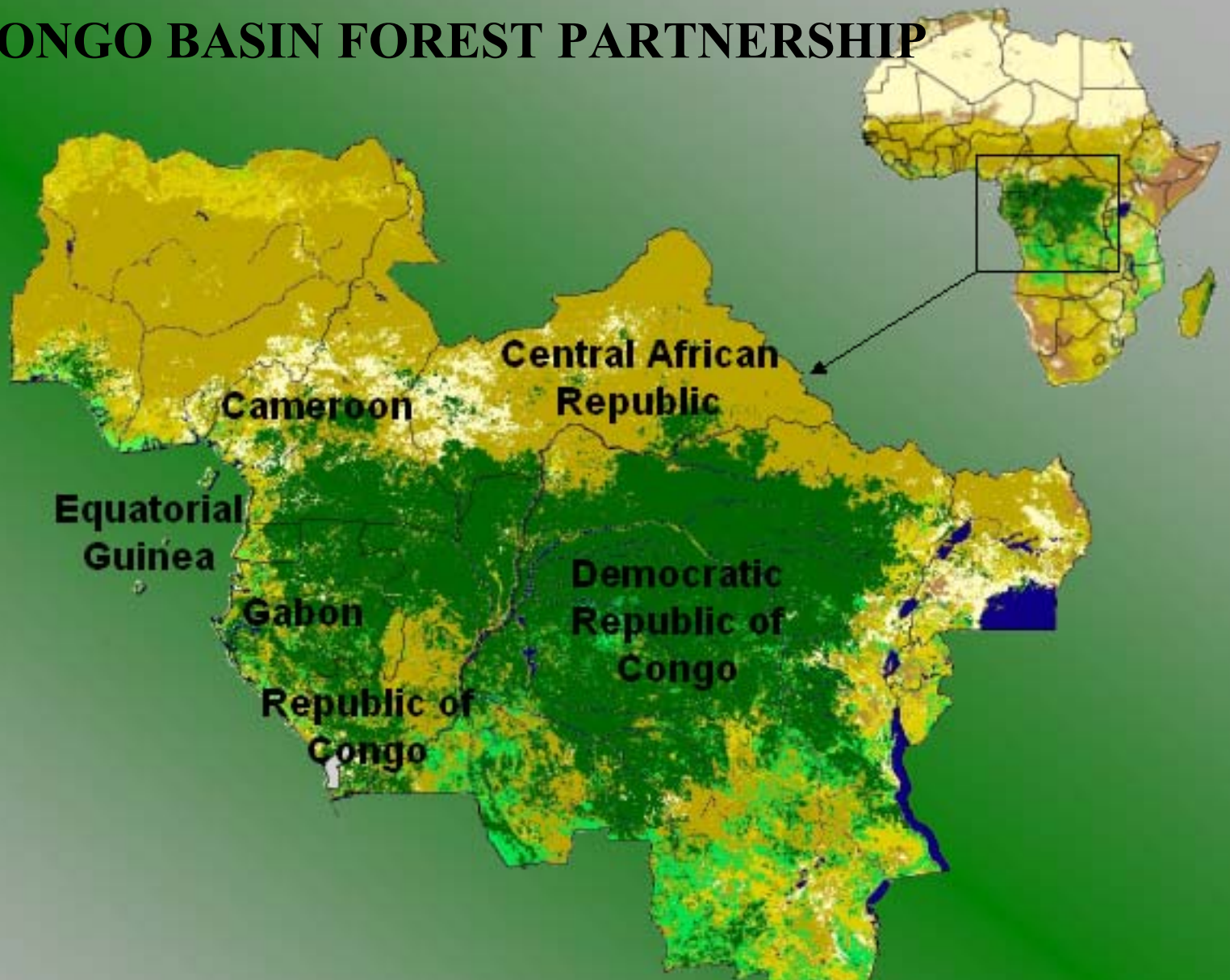


Image courtesy of the BBC

29 Partners: Governments, NGOs, Industry

Sustainable forest management: Making it happen

CONGO BASIN FOREST PARTNERSHIP



Sustainable forest management: Making it happen

Local Involvement, Economic Development and Sustainable Practices



“...results oriented partnerships among governments, the private sector, the scientific community, conservation groups and the organizations of civil society, all coming together to mobilize the resources we need to meet our ambitious goals.”

--Secretary Powell

Congo Basin Forest Partnership



Build capacity for actions by developing countries

Promote legal use and protection of forests

Emphasize public-private partnerships

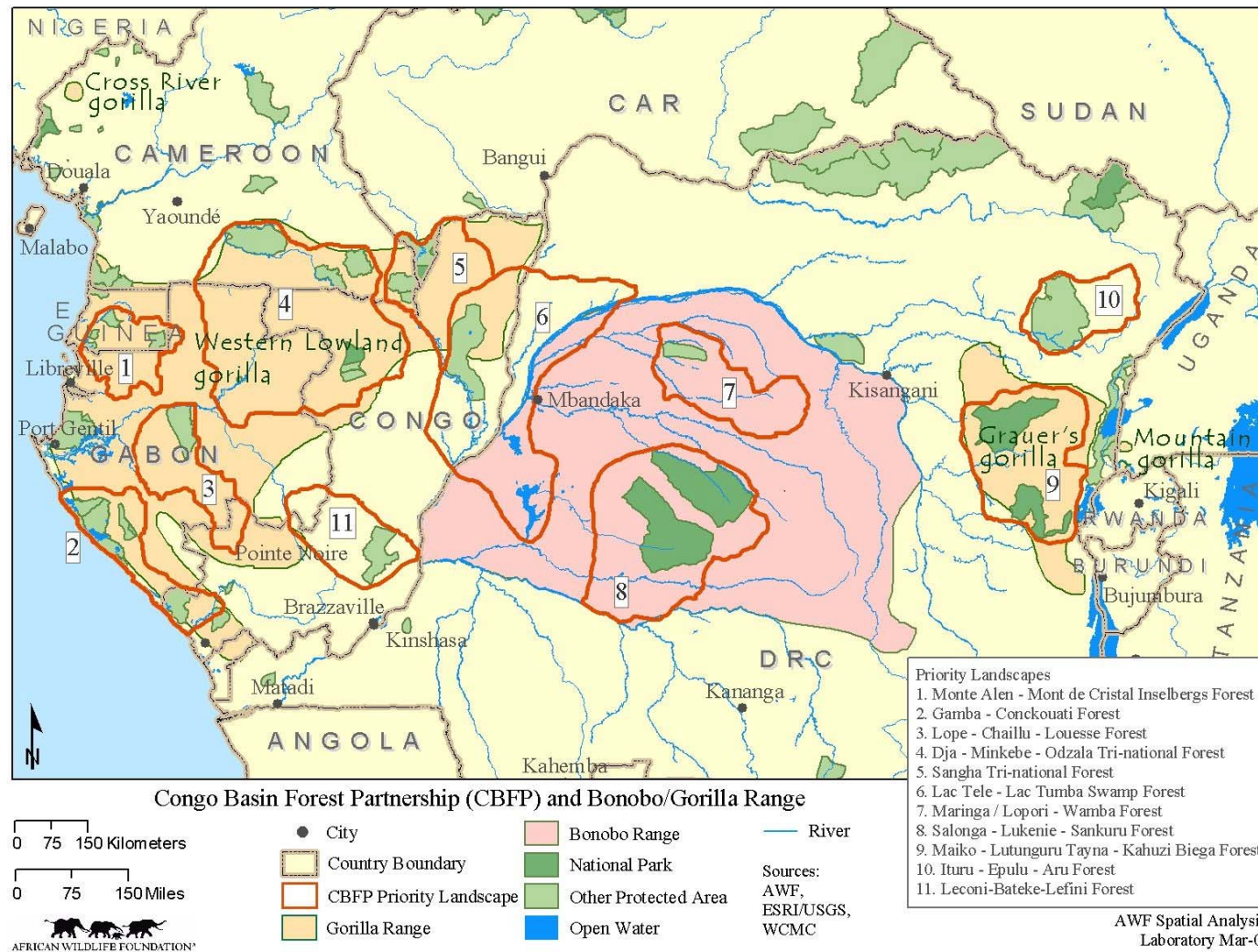
Congo Basin Forest Partnership

U.S. emphasis on...

Eleven key landscapes in six Central African countries:

- Cameroon
- Central African Republic
- Democratic Republic of the Congo
- Equatorial Guinea
- Gabon
- Republic of Congo

Eleven Key Landscapes in Six Countries



Sustainable forest management: Making it happen

Congo Basin Forest Partnership

- ✓ **Monitor and Assess Forests of the Congo Basin**
- ✓ **Strengthen and Establish Protected Areas, Buffer Zones, Ecological Corridors and Transboundary Parks: Network**
- ✓ **Capacity Building and Training: Govts., Industry, NGOs**
- ✓ **Participatory Actions: Define/Implement effective governance measures and policy reform**

Congo Basin Forest Partnership

First Meeting as WSSD Type II Partnership

Paris, January 2003

Second Meeting as WSSD Type II Partnership

Brazzaville, June 2004

The United States to invest up to \$53 million over four years (2002-2005), including a \$36 million increase for Central African Regional Program for the Environment (CARPE).



U.S. & South
Africa facilitate in
Brazzaville

-- June 21, 2002

“We will work together to combat illegal logging and other unsustainable practices, and we will implement programs to improve forest management and give people a stake in the preservation of the forest, by providing them with sustainable forest based livelihoods”

Secretary Powell

-- Sept. 4, 2002



Sustainable forest management: Making it happen

President's Initiative Against Illegal Logging

The Congo Basin Forest Partnership is a vehicle for implementing this important global initiative in the Congo Basin region



President's Initiative Against Illegal Logging

Actions in the Congo Basin

- Integrated remote sensing and monitoring
- Enhanced training and capacity building
- Reduced impact logging techniques
- Africa Forest Law and Governance Ministerial Conference

Congo Basin Forest Partnership

Forest Law Enforcement and Governance

Africa FLEG, Brazzaville (June 2002)

Africa FLEG Ministerial

Yaounde, Cameroon

October 2003

Accountability

